



[Go to Product page](#)

Datasheet for ABIN7536625

## Claudin 5 Protein (CLDN5) (AA 1-218) (GST tag)

### 1 Image

#### Overview

Quantity:	2 µg
Target:	Claudin 5 (CLDN5)
Protein Characteristics:	AA 1-218
Origin:	Human
Source:	Wheat germ
Protein Type:	Recombinant
Purification tag / Conjugate:	This Claudin 5 protein is labelled with GST tag.
Application:	Western Blotting (WB), ELISA, Antibody Array (AA), Affinity Purification (AP)

#### Product Details

Purpose:	CLDN5 (Human) Recombinant Protein (P01)
Sequence:	MGSAALEILG LVLCLVGWGG LILACGLPMW QVTAFLDHNI VTAQTTWKGL WMSCVVQSTG HMQCKVYDSV LALSTEVQAA RALTVSAVLL AFVALFVTLA GAQCTTCVAP GPAKARVALT GGVLYLFCGL LALVPLCWFA NIVVREFYDP SVPVSQKYEL GAALYIGWAA TALLMVGGL LCCGAWVCTG RPDLSFPVKY SAPRRPTATG DYDKKNYV
Characteristics:	Human CLDN5 full-length ORF ( NP_003268.1, 1 a.a. - 218 a.a.) recombinant protein with GST-tag at N-terminal.
Purification:	in vitro wheat germ expression system

#### Target Details

Target:	Claudin 5 (CLDN5)
---------	-------------------

## Target Details

Alternative Name:	CLDN5 ( <a href="#">CLDN5 Products</a> )
Background:	Full Gene Name: claudin 5 Synonyms: AWAL,BEC1,CPETRL1,TMVCF
Gene ID:	7122
NCBI Accession:	<a href="#">NM_003277</a>
Pathways:	<a href="#">Hepatitis C</a>

## Application Details

Application Notes:	Optimal working dilution should be determined by the investigator.
Comment:	Preparation method: in vitro, wheat germ expression system Product Quality tested by: 12.5% SDS-PAGE Stained with Coomassie Blue.
Restrictions:	For Research Use only

## Handling

Buffer:	50 mM Tris-HCl, 10 mM reduced Glutathione, pH =8.0 in the elution buffer.
Handling Advice:	Aliquot to avoid repeated freezing and thawing.
Storage:	-80 °C
Storage Comment:	Best use within three months from the date of receipt of this protein.

## Images

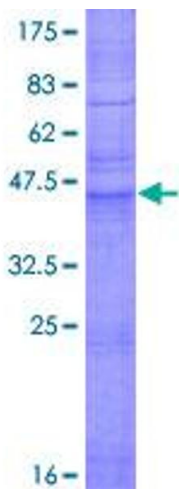


Image 1.