



[Go to Product page](#)

Datasheet for ABIN7536627

TUBA1A Protein (AA 1-451) (GST tag)

1 Image

Overview

Quantity:	2 µg
Target:	TUBA1A (Tuba1a)
Protein Characteristics:	AA 1-451
Origin:	Human
Source:	Wheat germ
Protein Type:	Recombinant
Purification tag / Conjugate:	This TUBA1A protein is labelled with GST tag.
Application:	ELISA, Western Blotting (WB), Antibody Array (AA), Affinity Purification (AP)

Product Details

Purpose:	TUBA1A (Human) Recombinant Protein (P01)
Sequence:	MRECISIHVG QAGVQIGNAC WELYCLEHGI QPDGQMPSDK TIGGGDDSFN TFFSETGAGK HVPRAVFVDL EPTVIDEVRT GTYRQLFHPE QLITGKEDAA NNYARGHYTI GKEIIDLVLD RIRKLADQCT GLQGFLVFHS FGGGTGSGFT SLLMERLSVD YGKKSLEFS IYPAPQVSTA VVEPYNSILT THTTLEHSDC AFMVDNEAIY DICRRNLDIE RPTYTNLNRL IGQIVSSITA SLRFDGALNV DLTEFQTNLV PYPRIHFPLA TYAPVISA EK AYHEQLSVAE ITNACFEPAN QMVKCDPRHG KYMACCLLYR GDVVPKDVNA AIATIKTKRT IQFVDWCPTG FKVGINYQPP TVVPGGDLAK VQRAVCMLSN TTAIAEAWAR LDHKFDLMYA KRAVHWYVVG EGMEEGEFSE AREDMAALEK DYEEVGVDVSV EGEGEEEGEE Y
Characteristics:	Human TUBA1A full-length ORF (AAH06468, 1 a.a. - 451 a.a.) recombinant protein with GST-tag at N-terminal.

Product Details

Purification: in vitro wheat germ expression system

Target Details

Target: TUBA1A (Tuba1a)

Alternative Name: TUBA1A ([Tuba1a Products](#))

Background: Gene: tubulin, alpha 1a
Synonyms: B-ALPHA-1, FLJ25113, LIS3, TUBA3

Gene ID: 7846

Pathways: [Microtubule Dynamics, M Phase](#)

Application Details

Application Notes: Optimal working dilution should be determined by the investigator.

Restrictions: For Research Use only

Handling

Buffer: 50 mM Tris-HCl, 10 mM reduced Glutathione, pH =8.0 in the elution buffer.

Handling Advice: Aliquot to avoid repeated freezing and thawing.

Storage: -80 °C

Storage Comment: Best use within three months from the date of receipt of this protein.

Images

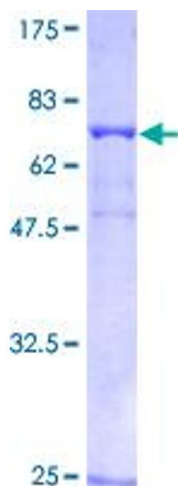


Image 1.