



[Go to Product page](#)

Datasheet for ABIN7536631

IKZF1 Protein (AA 1-477) (GST tag)

1 Image

Overview

Quantity:	2 µg
Target:	IKZF1
Protein Characteristics:	AA 1-477
Origin:	Human
Source:	Wheat germ
Protein Type:	Recombinant
Purification tag / Conjugate:	This IKZF1 protein is labelled with GST tag.
Application:	ELISA, Western Blotting (WB), Affinity Purification (AP), Antibody Array (AA)

Product Details

Purpose:	ZNFN1A1 (Human) Recombinant Protein (P01)
Sequence:	MDADEGQDMS QVSGKESPPV SDTPDEGDEP MPIPEDLSTT SGGQSSKSD RVVASNVKVE TQSDEENGRA CEMNGEECAE DLRLDASGE KMNGSHRDQG SSALSGVGGI RLPNGKCLKCD ICGIICIGPN VLMVHKRSHT GERPFQCNQC GASFTQKGNL LRHIKLSHSGE KPFKCHLCNY ACRRRDALTG HLRTHSVIKE ETNHSEMAED LCKIGSERSL VLDRLASNVA KRKSSMPQKF LGDKGLSDTP YDSSASYEKE NEMMKSHVMD QAINNAINYL GAESLRPLVQ TPPGGSEVVP VISPMYQLHK PLAEGTPRSN HSAQDSAVEN LLLLKAKLV PSEREASPSN SCQDSTDTE NNEEQRSLI YLTNHIAPHA RNGLSLKEEH RAYDLLRAAS ENSQDALRVV STSGEQMKVY KCEHCRVFLF DHVMTIHMGM CHGFRDPFEC NMCGYHSQDR YEFSSHITRG EHRFHMS
Characteristics:	Human ZNFN1A1 full-length ORF (AAH18349.1, 1 a.a. - 477 a.a.) recombinant protein with GST-tag at N-terminal.

Product Details

Purification: in vitro wheat germ expression system

Target Details

Target: IKZF1

Alternative Name: IKZF1 ([IKZF1 Products](#))

Background: Full Gene Name: IKAROS family zinc finger 1 (Ikaros)
Synonyms: Hs.54452,IK1,IKAROS,LYF1,PRO0758,ZNFN1A1,hIk-1

Gene ID: 10320

Pathways: [Production of Molecular Mediator of Immune Response](#)

Application Details

Application Notes: Optimal working dilution should be determined by the investigator.

Comment: Preparation method: in vitro, wheat germ expression system
Product Quality tested by: 12.5% SDS-PAGE Stained with Coomassie Blue.

Restrictions: For Research Use only

Handling

Buffer: 50 mM Tris-HCl, 10 mM reduced Glutathione, pH =8.0 in the elution buffer.

Handling Advice: Aliquot to avoid repeated freezing and thawing.

Storage: -80 °C

Storage Comment: Best use within three months from the date of receipt of this protein.

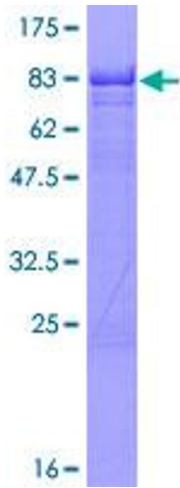


Image 1.