

Datasheet for ABIN7536633

Claudin 17 Protein (CLDN17) (AA 1-224) (GST tag)



[Go to Product page](#)

1 Image

Overview

Quantity:	2 µg
Target:	Claudin 17 (CLDN17)
Protein Characteristics:	AA 1-224
Origin:	Human
Source:	Wheat germ
Protein Type:	Recombinant
Purification tag / Conjugate:	This Claudin 17 protein is labelled with GST tag.
Application:	ELISA, Western Blotting (WB), Antibody Array (AA), Affinity Purification (AP)

Product Details

Purpose:	CLDN17 (Human) Recombinant Protein (P01)
Sequence:	MAFYPLQIAG LVLGFLGMVG TLATLLPQW RVSAFVGSNI IVFERLWEGL WMNCIRQARV RLQCKFYSSL LALPPAETA RALMCVAVAL SLIALLIGIC GMKQVQCTGS NERAKAYLLG TSGVLFILTG IFVLIPVSWT ANIIIRDFFYN PAIHIGQKRE LGAALFLGWA SAAVLFIGGG LLCGFCCCNR KKQGYRYPVP GYRVPHTDKR RNTTMLS KTS TSYV
Characteristics:	Human CLDN17 full-length ORF (NP_036263.1, 1 a.a. - 224 a.a.) recombinant protein with GST-tag at N-terminal.
Purification:	in vitro wheat germ expression system

Target Details

Target:	Claudin 17 (CLDN17)
---------	---------------------

Target Details

Alternative Name:	CLDN17 (CLDN17 Products)
Background:	Full Gene Name: claudin 17 Synonyms: MGC126552,MGC126554
Gene ID:	26285
NCBI Accession:	NM_012131
Pathways:	Cell-Cell Junction Organization , Hepatitis C

Application Details

Application Notes:	Optimal working dilution should be determined by the investigator.
Comment:	Preparation method: in vitro, wheat germ expression system Product Quality tested by: 12.5% SDS-PAGE Stained with Coomassie Blue.
Restrictions:	For Research Use only

Handling

Buffer:	50 mM Tris-HCl, 10 mM reduced Glutathione, pH =8.0 in the elution buffer.
Handling Advice:	Aliquot to avoid repeated freezing and thawing.
Storage:	-80 °C
Storage Comment:	Best use within three months from the date of receipt of this protein.

Images

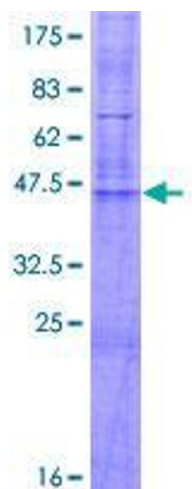


Image 1.