



[Go to Product page](#)

Datasheet for ABIN7536634

CD320 Protein (AA 1-282) (GST tag)

1 Image

Overview

Quantity:	2 µg
Target:	CD320
Protein Characteristics:	AA 1-282
Origin:	Human
Source:	Wheat germ
Protein Type:	Recombinant
Purification tag / Conjugate:	This CD320 protein is labelled with GST tag.
Application:	Western Blotting (WB), ELISA, Affinity Purification (AP), Antibody Array (AA)

Product Details

Purpose:	CD320 (Human) Recombinant Protein (P01)
Sequence:	MSGGWMAQVG AWRTGALGLA LLLLLGLGLG LEAAASPLST PTSAQAAGPS SGSCPPTKFQ CRTSGLCVPL TWRCDRDLDC SDGSDEEECR IEPCTQKGQC PPPPGLPCPC TGVSDCSGGT DKKLRNCSRL ACLAGELRCT LSDDCIPLTW RCDGHPDCPD SSDELGCGTN EILPEGDATT MGPPVTLESV TSLRNATTMG PPVTLESVPS VGNATSSSAG DQSGSPTAYG VIAAAVLSA SLVTATLLLL SWLRAQERLR PLGLLVAMKE SLLLSEQKTS LP
Characteristics:	Human CD320 full-length ORF (AAH00668, 1 a.a. - 282 a.a.) recombinant protein with GST-tag at N-terminal.
Purification:	in vitro wheat germ expression system

Target Details

Target:	CD320
Alternative Name:	CD320 (CD320 Products)
Background:	Full Gene Name: CD320 Molecule Synonyms: 8D6,8D6A
Gene ID:	51293

Application Details

Application Notes:	Optimal working dilution should be determined by the investigator.
Comment:	Preparation method: in vitro, wheat germ expression system Product Quality tested by: 12.5% SDS-PAGE Stained with Coomassie Blue.
Restrictions:	For Research Use only

Handling

Buffer:	50 mM Tris-HCl, 10 mM reduced Glutathione, pH =8.0 in the elution buffer.
Handling Advice:	Aliquot to avoid repeated freezing and thawing.
Storage:	-80 °C
Storage Comment:	Best use within three months from the date of receipt of this protein.

Images

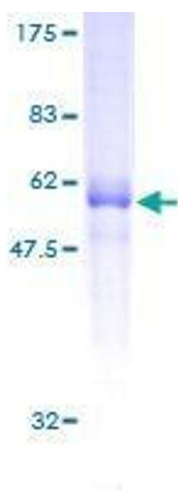


Image 1.