

Datasheet for ABIN7536639  
**BCL6B Protein (AA 1-480) (GST tag)**



[Go to Product page](#)

1 Image

Overview

Quantity:	2 µg
Target:	BCL6B
Protein Characteristics:	AA 1-480
Origin:	Human
Source:	Wheat germ
Protein Type:	Recombinant
Purification tag / Conjugate:	This BCL6B protein is labelled with GST tag.
Application:	Western Blotting (WB), ELISA, Antibody Array (AA), Affinity Purification (AP)

Product Details

Purpose:	BCL6B (Human) Recombinant Protein (P01)
Sequence:	MGSPAPEGA LGYVREFTRH SSDVLGNLNE LRLRGILTDV TLLVGGQPLR AHKAVLIACS GFFYSIFRGR AGVGVDVLSL PGGPEARFA PLLDFMYTSR LRLSPATAPA VLAAATYLQM EHVVQACHRF IQASYEPLGI SLRPLEAEPP TPPTAPPPGS PRRSEGHPDP PTESRSCSQG PPSPASDPK ACNWKKYKYI VLNSQASQAG SLVGERSSGQ PCPQARLPSG DEASSSSSSS SSSSSEEGPI PGPQSRLSPT AATVQFKCGA PASTPYLLTS QAQDTSGSPS ERARPLPGSE FFSCQNSEAV AGCSSGLDSL VPGDEDKPYK CQLCRSSFYR KGNLASHRTV HTGEKPYHCS ICGARFNRPA NLKTHSRIHS GEKPYKCETC GSRFVQVAHL RAHVLIHTGE KPYPCPTCGT RFRHLQTLKS HVRIHTGKPYHCDPCGLHF RHKSQLRLHL RQKHGAATNT KVHYHILGGP
Characteristics:	Human BCL6B full-length ORF ( AAH59404.1, 1 a.a. - 480 a.a.) recombinant protein with GST-tag at N-terminal.

## Product Details

---

Purification: in vitro wheat germ expression system

## Target Details

---

Target: BCL6B

Alternative Name: BCL6B ([BCL6B Products](#))

Background: Full Gene Name: B-cell CLL/lymphoma 6, member B (zinc finger protein)  
Synonyms: BAZF,ZBTB28,ZNF62

Gene ID: 255877

Pathways: [BCR Signaling](#)

## Application Details

---

Application Notes: Optimal working dilution should be determined by the investigator.

Comment: Preparation method: in vitro, wheat germ expression system  
Product Quality tested by: 12.5% SDS-PAGE Stained with Coomassie Blue.

Restrictions: For Research Use only

## Handling

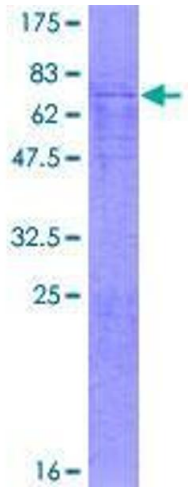
---

Buffer: 50 mM Tris-HCl, 10 mM reduced Glutathione, pH =8.0 in the elution buffer.

Handling Advice: Aliquot to avoid repeated freezing and thawing.

Storage: -80 °C

Storage Comment: Best use within three months from the date of receipt of this protein.



**Image 1.**