

Datasheet for ABIN7538093  
**anti-Morphine antibody**



[Go to Product page](#)

2 Images

### Overview

Quantity:	100 µL
Target:	Morphine
Reactivity:	Please inquire
Host:	Rabbit
Clonality:	Polyclonal
Application:	ELISA, Western Blotting (WB)

### Product Details

Purpose:	Rabbit polyclonal antibodies to Morphine
Immunogen:	Morphine-6-Hemisuccinate conjugated to Ovalbumin
Isotype:	IgG, IgM
Specificity:	Morphine
Purification:	Protein A then Immunogen affinity column

### Target Details

Target:	Morphine
Abstract:	<a href="#">Morphine Products</a>
Target Type:	Chemical
Background:	Morphine, the most powerful opiate analgesic drug in opium, acts directly on synapses of the arcuate nuclei within the central nervous system to relieve pain. It is a highly addictive drug, to

Target Details

which tolerance as well as physical and psychological dependences quickly develop. Administered as intravenous, subcutaneous or epidural injections, Morphine creates a profound contraction sensation in the muscles due to histamine release and also produces a "rush" mediated by different receptors in the central nervous system. Morphine is a phenanthrene opioid receptor agonist. By binding to  $\mu$  opioid receptors within the central nervous system associated with analgesia, sedation, physical dependence and respiratory depression, the euphoric effects of Morphine are quickly followed by withdrawal symptoms.

Molecular Weight: 285 Da

Application Details

Application Notes: Western blot: 0.1-1.0  $\mu$ g/mL

Restrictions: For Research Use only

Handling

Format: Liquid

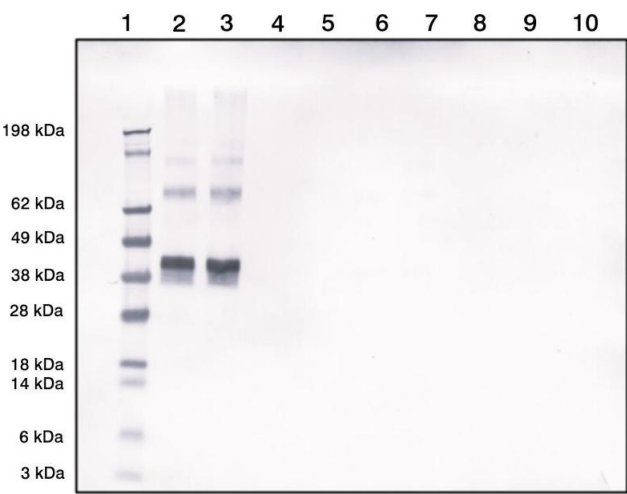
Concentration: Lot specific

Buffer: Glycine pH 7.2

Storage: 4 °C, -80 °C

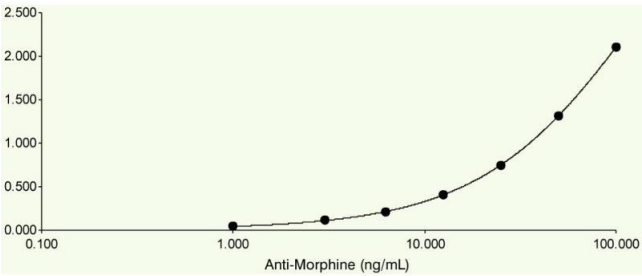
Storage Comment: Short term up to 1 month at 2-8°C, long term can be held for up to five years at -70°C

Images



Western Blotting

**Image 1.** Morphine-ovalbumin conjugate detected by Western blotting using our polyclonal at 1in2000 dilution (1 = Marker, 2 =Morphine-Ovalbumin (50 ng), 3 =Morphine-Ovalbumin (50 ng), 4 =Blank, 5 =Blank, 6 =Ovalbumin (50 ng), 7 = Ovalbumin (50 ng)), 8 =Blank, 9 Blank, 10 =Blank)



ELISA

**Image 2.** ELISA Plates were coated with 1 µg/mL morphine-BSA, our polyclonal was added at different concentrations and detected with an anti-rabbit HRP.