



[Go to Product page](#)

Datasheet for ABIN7538098

anti-S100A1 antibody

2 Images

Overview

Quantity:	100 µL
Target:	S100A1
Reactivity:	Human, Cow
Host:	Rabbit
Clonality:	Polyclonal
Conjugate:	This S100A1 antibody is un-conjugated
Application:	Western Blotting (WB), ELISA

Product Details

Purpose:	Rabbit polyclonal antibodies to Bovine S100
Immunogen:	Native source protein
Isotype:	IgG, IgM
Specificity:	Specific to all isotypes (alpha:alpha, alpha:beta and beta:beta)
Cross-Reactivity (Details):	May cross-react with other species
Purification:	Protein A affinity column

Target Details

Target:	S100A1
Alternative Name:	S100 (S100A1 Products)
Background:	Small calcium binding protein that plays important roles in several biological processes such as

Target Details

Ca²⁺ homeostasis, chondrocyte biology and cardiomyocyte regulation. In response to an increase in intracellular Ca²⁺ levels, binds calcium which triggers conformational changes. These changes allow interactions with specific target proteins and modulate their activity. Regulates a network in cardiomyocytes controlling sarcoplasmic reticulum Ca²⁺ cycling and mitochondrial function through interaction with the ryanodine receptors RYR1 and RYR2, sarcoplasmic reticulum Ca²⁺-ATPase/ATP2A2 and mitochondrial F1-ATPase. Facilitates diastolic Ca²⁺ dissociation and myofilament mechanics in order to improve relaxation during diastole

Molecular Weight: 10668 Da (beta), 10518 Da (alpha)

Pathways: [Regulation of Muscle Cell Differentiation](#), [Toll-Like Receptors Cascades](#), [S100 Proteins](#)

Application Details

Application Notes: Western blot: 0.1-1.0 µg/mL

Restrictions: For Research Use only

Handling

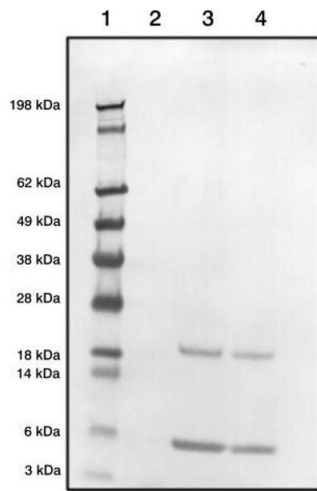
Format: Liquid

Concentration: Lot specific

Buffer: Glycine pH 7.2

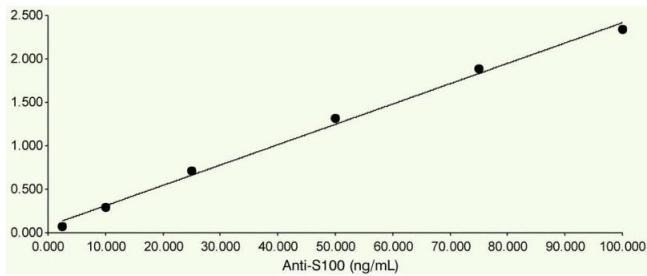
Storage: 4 °C, -80 °C

Storage Comment: Short term up to 1 month at 2-8°C, long term can be held for up to five years at -70°C



Western Blotting

Image 1. Western blot demonstrating our polyclonal detecting native bovine S100 (P02638, P02639) at 1in2000 dilution (1 = Marker, 2 =Blank, 3 =S100 (3 μ), 4=S100 (3 μ))



ELISA

Image 2. ELISA Plates were coated with 1 μ g/mL Bovine S100 protein, our polyclonal rabbit anti-S100 was added at different concentrations and detected with an anti-rabbit HRP.