



[Go to Product page](#)

Datasheet for ABIN7538133

MFI2 Protein (AA 20-708) (His tag)

1 Image

Overview

Quantity:	50 µg
Target:	MFI2
Protein Characteristics:	AA 20-708
Origin:	Human
Source:	Mammalian Cells
Protein Type:	Recombinant
Purification tag / Conjugate:	This MFI2 protein is labelled with His tag.

Product Details

Purpose:	Recombinant Human MELTF Protein with C-terminal 6XHis tag
Specificity:	MELTF (Gly20-Gln708) 6xHis tag
Characteristics:	Extracellular Domain Protein
Purification:	Purified from cell culture supernatant by affinity chromatography
Purity:	The purity of the protein is greater than 85 % as determined by SDS-PAGE and Coomassie blue staining.

Target Details

Target:	MFI2
Alternative Name:	MELTF (MFI2 Products)
Background:	The protein encoded by this gene is a cell-surface glycoprotein found on melanoma cells. The

Target Details

protein shares sequence similarity and iron-binding properties with members of the transferrin superfamily. The importance of the iron binding function has not yet been identified. This gene resides in the same region of chromosome 3 as members of the transferrin superfamily. Alternative splicing results in two transcript variants. [provided by RefSeq, Jul 2008]

Molecular Weight: predicted molecular mass of 76.2 kDa after removal of the signal peptide. The apparent molecular mass of MELTF-His is 70-100 kDa due to glycosylation.

UniProt: [P08582](#)

Pathways: [Transition Metal Ion Homeostasis](#), [Cell-Cell Junction Organization](#)

Application Details

Restrictions: For Research Use only

Handling

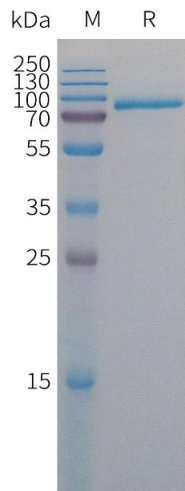
Format: Lyophilized

Buffer: Lyophilized from sterile PBS, pH 7.4. Normally 5 % - 8 % trehalose is added as protectants before lyophilization.

Storage: -20 °C, -80 °C

Storage Comment: Store at -20°C to -80°C for 12 months in lyophilized form. After reconstitution, if not intended for use within a month, aliquot and store at -80°C (Avoid repeated freezing and thawing). Lyophilized proteins are shipped at ambient temperature.

Expiry Date: 12 months



SDS-PAGE

Image 1. Human MELTF Protein, His Tag on SDS-PAGE under reducing condition.