



[Go to Product page](#)

Datasheet for ABIN7538191

CX3CL1 Protein (AA 25-341) (His tag)

1 Image

Overview

Quantity:	50 µg
Target:	CX3CL1
Protein Characteristics:	AA 25-341
Origin:	Human
Source:	Mammalian Cells
Protein Type:	Recombinant
Purification tag / Conjugate:	This CX3CL1 protein is labelled with His tag.

Product Details

Purpose:	Recombinant human CX3CL1 Protein with C-terminal 6xHis tag
Specificity:	CX3CL1 (Gln25-Gln341) 6xHis tag
Characteristics:	Extracellular Domain Protein
Purification:	Purified from cell culture supernatant by affinity chromatography
Purity:	The purity of the protein is greater than 85 % as determined by SDS-PAGE and Coomassie blue staining.

Target Details

Target:	CX3CL1
Alternative Name:	CX3CL1 (CX3CL1 Products)
Background:	This gene belongs to the CX3C subgroup of chemokines, characterized by the number of amino

Target Details

acids located between the conserved cysteine residues. This is the only member of the CX3C subgroup, which contains three amino acids between cysteine residues, resulting in a Cys-X-X-X-Cys configuration. The encoded protein contains an extended mucin-like stalk with a chemokine domain on top, and exists in both a membrane-anchored form where it acts as a binding molecule, or, in soluble form, as a chemotactic cytokine. The mature form of this protein can be cleaved at the cell surface, yielding different soluble forms that can interact with the G-protein coupled receptor, C-X3-C motif chemokine receptor 1 gene product. This gene plays a role in a wide range of diseases, including cancer, vasculitis, neuropathies, atherosclerosis, inflammatory diseases, and in human immunodeficiency virus infections. [provided by RefSeq, Sep 2017]

Molecular Weight: predicted molecular mass of 34.4 kDa after removal of the signal peptide.

UniProt: [P78423](#)

Pathways: [Synaptic Membrane](#)

Application Details

Restrictions: For Research Use only

Handling

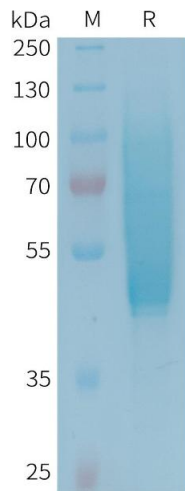
Format: Lyophilized

Buffer: Lyophilized from sterile PBS, pH 7.4. Normally 5 % - 8 % trehalose is added as protectants before lyophilization.

Storage: -20 °C,-80 °C

Storage Comment: Store at -20°C to -80°C for 12 months in lyophilized form. After reconstitution, if not intended for use within a month, aliquot and store at -80°C (Avoid repeated freezing and thawing).
Lyophilized proteins are shipped at ambient temperature.

Expiry Date: 12 months



SDS-PAGE

Image 1. Human CX3CL1 Protein, His Tag on SDS-PAGE under reducing condition.