

Datasheet for ABIN7538204

Complement Factor H Protein (CFH) (AA 19-1231) (His tag)



[Go to Product page](#)

1 Image

Overview

Quantity:	50 µg
Target:	Complement Factor H (CFH)
Protein Characteristics:	AA 19-1231
Origin:	Human
Source:	Mammalian Cells
Protein Type:	Recombinant
Purification tag / Conjugate:	This Complement Factor H protein is labelled with His tag.

Product Details

Purpose:	Recombinant human CFH Protein with C-terminal 10xHis tag
Specificity:	CFH (Glu19-Arg1231) 10xHis tag
Characteristics:	Extracellular Domain Protein
Purification:	Purified from cell culture supernatant by affinity chromatography
Purity:	The purity of the protein is greater than 85 % as determined by SDS-PAGE and Coomassie blue staining.

Target Details

Target:	Complement Factor H (CFH)
Alternative Name:	CFH (CFH Products)
Background:	This gene is a member of the Regulator of Complement Activation (RCA) gene cluster and

Target Details

encodes a protein with twenty short consensus repeat (SCR) domains. This protein is secreted into the bloodstream and has an essential role in the regulation of complement activation, restricting this innate defense mechanism to microbial infections. Mutations in this gene have been associated with hemolytic-uremic syndrome (HUS) and chronic hypocomplementemic nephropathy. Alternate transcriptional splice variants, encoding different isoforms, have been characterized. [provided by RefSeq, Oct 2011]

Molecular Weight: predicted molecular mass of 138.4 kDa after removal of the signal peptide. The apparent molecular mass of CFH-His is 130-250 kDa due to glycosylation.

UniProt: [P08603](#)

Pathways: [Complement System](#), [Cellular Response to Molecule of Bacterial Origin](#)

Application Details

Restrictions: For Research Use only

Handling

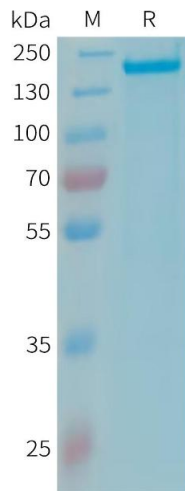
Format: Lyophilized

Buffer: Lyophilized from sterile PBS, pH 7.4. Normally 5 % - 8 % trehalose is added as protectants before lyophilization.

Storage: -20 °C,-80 °C

Storage Comment: Store at -20°C to -80°C for 12 months in lyophilized form. After reconstitution, if not intended for use within a month, aliquot and store at -80°C (Avoid repeated freezing and thawing).
Lyophilized proteins are shipped at ambient temperature.

Expiry Date: 12 months



SDS-PAGE

Image 1. Human CFH Protein, His Tag on SDS-PAGE under reducing condition.