

Datasheet for ABIN7538213

CRLF2 Protein (AA 23-231) (His tag)



[Go to Product page](#)

1 Image

Overview

Quantity:	50 µg
Target:	CRLF2
Protein Characteristics:	AA 23-231
Origin:	Human
Source:	Mammalian Cells
Protein Type:	Recombinant
Purification tag / Conjugate:	This CRLF2 protein is labelled with His tag.

Product Details

Purpose:	Recombinant Human CRLF2 Protein with C-terminal 6XHis tag
Specificity:	CRLF2 (Gln23-Lys231) 6xHis tag
Characteristics:	Extracellular Domain Protein
Purification:	Purified from cell culture supernatant by affinity chromatography
Purity:	The purity of the protein is greater than 85 % as determined by SDS-PAGE and Coomassie blue staining.

Target Details

Target:	CRLF2
Alternative Name:	CRLF2 (CRLF2 Products)
Background:	This gene encodes a member of the type I cytokine receptor family. The encoded protein is a

Target Details

receptor for thymic stromal lymphopoietin (TSLP). Together with the interleukin 7 receptor (IL7R), the encoded protein and TSLP activate STAT3, STAT5, and JAK2 pathways, which control processes such as cell proliferation and development of the hematopoietic system. Rearrangement of this gene with immunoglobulin heavy chain gene (IGH) on chromosome 14, or with P2Y purinoceptor 8 gene (P2RY8) on the same X or Y chromosomes is associated with B-progenitor acute lymphoblastic leukemia (ALL) and Down syndrome ALL. Alternatively spliced transcript variants have been found for this gene. [provided by RefSeq, Sep 2014]

Molecular Weight: predicted molecular mass of 25.0 kDa after removal of the signal peptide. The apparent molecular mass of CRLF2-His is 25-55 kDa due to glycosylation.

UniProt: [Q9HC73](#)

Application Details

Restrictions: For Research Use only

Handling

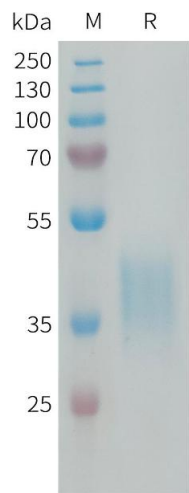
Format: Lyophilized

Buffer: Lyophilized from sterile PBS, pH 7.4. Normally 5 % - 8 % trehalose is added as protectants before lyophilization.

Storage: -20 °C,-80 °C

Storage Comment: Store at -20°C to -80°C for 12 months in lyophilized form. After reconstitution, if not intended for use within a month, aliquot and store at -80°C (Avoid repeated freezing and thawing).
Lyophilized proteins are shipped at ambient temperature.

Expiry Date: 12 months



SDS-PAGE

Image 1. Human C Protein, His Tag on SDS-PAGE under reducing condition.