



[Go to Product page](#)

Datasheet for ABIN7538220

ENPP2 Protein (AA 49-863) (His tag)

1 Image

Overview

Quantity:	50 µg
Target:	ENPP2
Protein Characteristics:	AA 49-863
Origin:	Human
Source:	Mammalian Cells
Protein Type:	Recombinant
Purification tag / Conjugate:	This ENPP2 protein is labelled with His tag.

Product Details

Purpose:	Recombinant Human ENPP2 Protein with N-terminal 6xHis tag
Specificity:	6xHis tag ENPP2 (Asp49-Ile863)
Characteristics:	Extracellular Domain Protein
Purification:	Purified from cell culture supernatant by affinity chromatography
Purity:	The purity of the protein is greater than 85 % as determined by SDS-PAGE and Coomassie blue staining.

Target Details

Target:	ENPP2
Alternative Name:	ENPP2 (ENPP2 Products)
Background:	The protein encoded by this gene functions as both a phosphodiesterase, which cleaves

Target Details

phosphodiester bonds at the 5' end of oligonucleotides, and a phospholipase, which catalyzes production of lysophosphatidic acid (LPA) in extracellular fluids. LPA evokes growth factor-like responses including stimulation of cell proliferation and chemotaxis. This gene product stimulates the motility of tumor cells and has angiogenic properties, and its expression is upregulated in several kinds of carcinomas. The gene product is secreted and further processed to make the biologically active form. Several alternatively spliced transcript variants encoding different isoforms have been identified. [provided by RefSeq, Aug 2008]

Molecular Weight: predicted molecular mass of 94.5 kDa after removal of the signal peptide. The apparent molecular mass of His-ENPP2 is 100-130 kDa due to glycosylation.

UniProt: [Q13822](#)

Application Details

Restrictions: For Research Use only

Handling

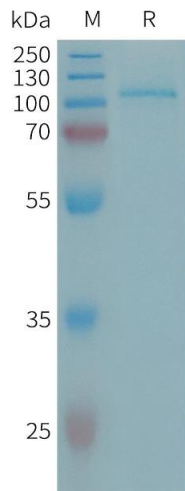
Format: Lyophilized

Buffer: Lyophilized from sterile PBS, pH 7.4. Normally 5 % - 8 % trehalose is added as protectants before lyophilization.

Storage: -20 °C,-80 °C

Storage Comment: Store at -20°C to -80°C for 12 months in lyophilized form. After reconstitution, if not intended for use within a month, aliquot and store at -80°C (Avoid repeated freezing and thawing).
Lyophilized proteins are shipped at ambient temperature.

Expiry Date: 12 months



SDS-PAGE

Image 1. Human E Protein, His Tag on SDS-PAGE under reducing condition.