



[Go to Product page](#)

Datasheet for ABIN7538225

## EGFR Protein (AA 25-645) (His tag)

### 1 Image

#### Overview

Quantity:	50 µg
Target:	EGFR
Protein Characteristics:	AA 25-645
Origin:	Cynomolgus
Source:	Mammalian Cells
Protein Type:	Recombinant
Purification tag / Conjugate:	This EGFR protein is labelled with His tag.

#### Product Details

Purpose:	Recombinant Cynomolgus EGFR protein with C-terminal 10xHis tag
Specificity:	EGFR (Leu25-Ser645) 10xHis tag
Characteristics:	Extracellular Domain Protein
Purification:	Purified from cell culture supernatant by affinity chromatography
Purity:	The purity of the protein is greater than 85 % as determined by SDS-PAGE and Coomassie blue staining.

#### Target Details

Target:	EGFR
Alternative Name:	EGFR ( <a href="#">EGFR Products</a> )
Background:	The protein encoded by this gene is a transmembrane glycoprotein that is a member of the

## Target Details

---

protein kinase superfamily. This protein is a receptor for members of the epidermal growth factor family. EGFR is a cell surface protein that binds to epidermal growth factor, thus inducing receptor dimerization and tyrosine autophosphorylation leading to cell proliferation. Mutations in this gene are associated with lung cancer. EGFR is a component of the cytokine storm which contributes to a severe form of Coronavirus Disease 2019 (COVID-19) resulting from infection with severe acute respiratory syndrome coronavirus-2 (SARS-CoV-2). [provided by RefSeq, Jul 2020]

**Molecular Weight:** predicted molecular mass of 70.0 kDa after removal of the signal peptide. The apparent molecular mass of cEGFR-His is 70-130 kDa due to glycosylation.

**UniProt:** [A0A2K5WK39](#)

**Pathways:** [NF-kappaB Signaling](#), [RTK Signaling](#), [Fc-epsilon Receptor Signaling Pathway](#), [EGFR Signaling Pathway](#), [Neurotrophin Signaling Pathway](#), [Stem Cell Maintenance](#), [Hepatitis C](#), [Positive Regulation of Response to DNA Damage Stimulus](#), [Interaction of EGFR with phospholipase C-gamma](#), [Thromboxane A2 Receptor Signaling](#), [EGFR Downregulation](#), [S100 Proteins](#)

## Application Details

---

**Restrictions:** For Research Use only

## Handling

---

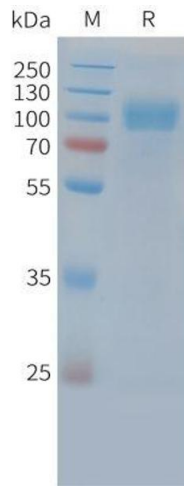
**Format:** Lyophilized

**Buffer:** Lyophilized from sterile PBS, pH 7.4. Normally 5 % - 8 % trehalose is added as protectants before lyophilization.

**Storage:** -20 °C,-80 °C

**Storage Comment:** Store at -20°C to -80°C for 12 months in lyophilized form. After reconstitution, if not intended for use within a month, aliquot and store at -80°C (Avoid repeated freezing and thawing).  
Lyophilized proteins are shipped at ambient temperature.

**Expiry Date:** 12 months



### SDS-PAGE

**Image 1.** Cynomolgus EGFR Protein, His Tag on SDS-PAGE under reducing condition.