



[Go to Product page](#)

Datasheet for ABIN7538300

## GLP2R Protein (AA 1-173) (His tag)

### 1 Image

#### Overview

Quantity:	50 µg
Target:	GLP2R
Protein Characteristics:	AA 1-173
Origin:	Human
Source:	Mammalian Cells
Protein Type:	Recombinant
Purification tag / Conjugate:	This GLP2R protein is labelled with His tag.

#### Product Details

Purpose:	Recombinant human GLP2R Protein with C-terminal 6xHis tag
Specificity:	GLP2R (Met1-Ala173) 6xHis tag
Characteristics:	Extracellular Domain Protein
Purification:	Purified from cell culture supernatant by affinity chromatography
Purity:	The purity of the protein is greater than 85 % as determined by SDS-PAGE and Coomassie blue staining.

#### Target Details

Target:	GLP2R
Alternative Name:	GLP2R ( <a href="#">GLP2R Products</a> )
Background:	This gene encodes a G protein-coupled receptor that is closely related to the glucagon receptor

## Target Details

and binds to glucagon-like peptide-2 (GLP2). Signalling through GLP2 stimulates intestinal growth and increases villus height in the small intestine, concomitant with increased crypt cell proliferation and decreased enterocyte apoptosis. [provided by RefSeq, Dec 2014]

Molecular Weight: predicted molecular mass of 20.1 kDa after removal of the signal peptide.

UniProt: [O95838](#)

Pathways: [Positive Regulation of Peptide Hormone Secretion](#), [Peptide Hormone Metabolism](#), [cAMP Metabolic Process](#), [Feeding Behaviour](#)

## Application Details

Restrictions: For Research Use only

## Handling

Format: Lyophilized

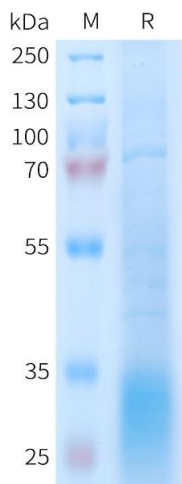
Buffer: Lyophilized from sterile PBS, pH 7.4. Normally 5 % - 8 % trehalose is added as protectants before lyophilization.

Storage: -20 °C,-80 °C

Storage Comment: Store at -20°C to -80°C for 12 months in lyophilized form. After reconstitution, if not intended for use within a month, aliquot and store at -80°C (Avoid repeated freezing and thawing).  
Lyophilized proteins are shipped at ambient temperature.

Expiry Date: 12 months

## Images



### SDS-PAGE

**Image 1.** Human R Protein, His Tag on SDS-PAGE under reducing condition.