



[Go to Product page](#)

Datasheet for ABIN7538338

## IL1RL2 Protein (AA 20-335) (His tag)

### 1 Image

#### Overview

Quantity:	50 µg
Target:	IL1RL2
Protein Characteristics:	AA 20-335
Origin:	Human
Source:	Mammalian Cells
Protein Type:	Recombinant
Purification tag / Conjugate:	This IL1RL2 protein is labelled with His tag.

#### Product Details

Purpose:	Recombinant Human IL1RL2 Protein with C-terminal 6xHis tag
Specificity:	IL1RL2 (Asp20-Arg335) 6xHis tag
Characteristics:	Extracellular Domain Protein
Purification:	Purified from cell culture supernatant by affinity chromatography
Purity:	The purity of the protein is greater than 85 % as determined by SDS-PAGE and Coomassie blue staining.

#### Target Details

Target:	IL1RL2
Alternative Name:	IL1RL2 ( <a href="#">IL1RL2 Products</a> )
Background:	The protein encoded by this gene is a member of the interleukin 1 receptor family. An

## Target Details

---

experiment with transient gene expression demonstrated that this receptor was incapable of binding to interleukin 1 alpha and interleukin 1 beta with high affinity. This gene and four other interleukin 1 receptor family genes, including interleukin 1 receptor, type I (IL1R1), interleukin 1 receptor, type II (IL1R2), interleukin 1 receptor-like 1 (IL1RL1), and interleukin 18 receptor 1 (IL18R1), form a cytokine receptor gene cluster in a region mapped to chromosome 2q12. [provided by RefSeq, Jul 2008]

---

Molecular Weight: predicted molecular mass of 36.8 kDa after removal of the signal peptide.

---

UniProt: [Q9HB29](#)

## Application Details

---

Restrictions: For Research Use only

## Handling

---

Format: Lyophilized

---

Buffer: Lyophilized from sterile PBS, pH 7.4. Normally 5 % - 8 % trehalose is added as protectants before lyophilization.

---

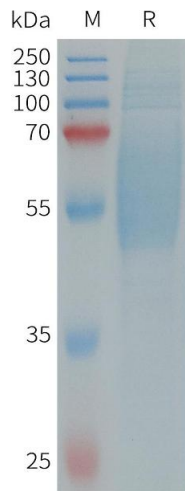
Storage: -20 °C,-80 °C

---

Storage Comment: Store at -20°C to -80°C for 12 months in lyophilized form. After reconstitution, if not intended for use within a month, aliquot and store at -80°C (Avoid repeated freezing and thawing).  
Lyophilized proteins are shipped at ambient temperature.

---

Expiry Date: 12 months



### SDS-PAGE

**Image 1.** Human IL1RL2 Protein, His Tag on SDS-PAGE under reducing condition.