



[Go to Product page](#)

Datasheet for ABIN7538348

KIR3DL3 Protein (AA 26-322) (His tag)

1 Image

Overview

| | |
|-------------------------------|--|
| Quantity: | 50 µg |
| Target: | KIR3DL3 |
| Protein Characteristics: | AA 26-322 |
| Origin: | Human |
| Source: | Mammalian Cells |
| Protein Type: | Recombinant |
| Purification tag / Conjugate: | This KIR3DL3 protein is labelled with His tag. |

Product Details

| | |
|------------------|---|
| Purpose: | Recombinant human KIR3DL3 Protein with C-terminal 6xHis tag |
| Specificity: | KIR3DL3 (Gln26-Leu322) 6xHis tag |
| Characteristics: | Extracellular Domain Protein |
| Purification: | Purified from cell culture supernatant by affinity chromatography |
| Purity: | The purity of the protein is greater than 85 % as determined by SDS-PAGE and Coomassie blue staining. |

Target Details

| | |
|-------------------|---|
| Target: | KIR3DL3 |
| Alternative Name: | KIR3DL3 (KIR3DL3 Products) |
| Background: | Killer cell immunoglobulin-like receptors (KIRs) are transmembrane glycoproteins expressed by |

Target Details

natural killer cells and subsets of T cells. The KIR genes are polymorphic and highly homologous and they are found in a cluster on chromosome 19q13.4 within the 1 Mb leukocyte receptor complex (LRC). The gene content of the KIR gene cluster varies among haplotypes, although several "framework" genes are found in all haplotypes (KIR3DL3, KIR3DP1, KIR3DL4, KIR3DL2). The KIR proteins are classified by the number of extracellular immunoglobulin domains (2D or 3D) and by whether they have a long (L) or short (S) cytoplasmic domain. KIR proteins with the long cytoplasmic domain transduce inhibitory signals upon ligand binding via an immune tyrosine-based inhibitory motif (ITIM), while KIR proteins with the short cytoplasmic domain lack the ITIM motif and instead associate with the TYRO protein tyrosine kinase binding protein to transduce activating signals. The ligands for several KIR proteins are subsets of HLA class I molecules, thus, KIR proteins are thought to play an important role in regulation of the immune response. This gene is one of the "framework" loci that is present on all haplotypes. [provided by RefSeq, Jul 2008]

Molecular Weight: predicted molecular mass of 33.1 kDa after removal of the signal peptide. The apparent molecular mass of KIR3DL3-His is 35-55 kDa due to glycosylation.

UniProt: [Q8N743](#)

Application Details

Restrictions: For Research Use only

Handling

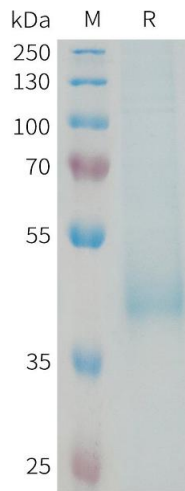
Format: Lyophilized

Buffer: Lyophilized from sterile PBS, pH 7.4. Normally 5 % - 8 % trehalose is added as protectants before lyophilization.

Storage: -20 °C,-80 °C

Storage Comment: Store at -20°C to -80°C for 12 months in lyophilized form. After reconstitution, if not intended for use within a month, aliquot and store at -80°C (Avoid repeated freezing and thawing). Lyophilized proteins are shipped at ambient temperature.

Expiry Date: 12 months



SDS-PAGE

Image 1. Human DL3 Protein, His Tag on SDS-PAGE under reducing condition.