

Datasheet for ABIN7538354

**LILRA2 Protein (AA 24-449) (His tag)**[Go to Product page](#)**1** Image

## Overview

Quantity:	50 µg
Target:	LILRA2
Protein Characteristics:	AA 24-449
Origin:	Human
Source:	Mammalian Cells
Protein Type:	Recombinant
Purification tag / Conjugate:	This LILRA2 protein is labelled with His tag.

## Product Details

Purpose:	Recombinant Human LILRA2 Protein with C-terminal 6xHis tag
Specificity:	LILRA2 (Gly24-Asn449) 6xHis tag
Characteristics:	Extracellular Domain Protein
Purification:	Purified from cell culture supernatant by affinity chromatography
Purity:	The purity of the protein is greater than 85 % as determined by SDS-PAGE and Coomassie blue staining.

## Target Details

Target:	LILRA2
Alternative Name:	LILRA2 ( <a href="#">LILRA2 Products</a> )
Background:	This gene encodes a member of a family of immunoreceptors that are expressed

## Target Details

predominantly on monocytes and B cells, and at lower levels on dendritic cells and natural killer cells. The encoded protein is an activating receptor that inhibits dendritic cell differentiation and antigen presentation and suppresses innate immune response. Alternatively spliced transcript variants encoding different isoforms have been found. This gene is located in a cluster of related genes on chromosome 19 and there is a pseudogene for this gene on chromosome 3.  
[provided by RefSeq, Mar 2014]

Molecular Weight: predicted molecular mass of 47.8 kDa after removal of the signal peptide. The apparent molecular mass of LILRA2-His is 55-100 kDa due to glycosylation.

UniProt: [Q8N149](#)

## Application Details

Restrictions: For Research Use only

## Handling

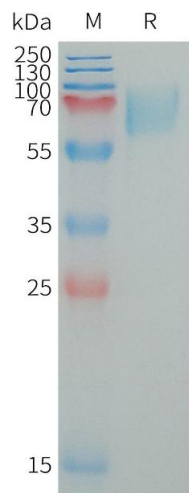
Format: Lyophilized

Buffer: Lyophilized from sterile PBS, pH 7.4. Normally 5 % - 8 % trehalose is added as protectants before lyophilization.

Storage: -20 °C, -80 °C

Storage Comment: Store at -20°C to -80°C for 12 months in lyophilized form. After reconstitution, if not intended for use within a month, aliquot and store at -80°C (Avoid repeated freezing and thawing).  
Lyophilized proteins are shipped at ambient temperature.

Expiry Date: 12 months



SDS-PAGE

**Image 1.** Human LI Protein, His Tag on SDS-PAGE under reducing condition.