

Datasheet for ABIN7538388  
**NG2 Protein (AA 1538-2221) (Fc Tag)**



[Go to Product page](#)

1 Image

Overview

Quantity:	50 µg
Target:	NG2 (MCSP)
Protein Characteristics:	AA 1538-2221
Origin:	Human
Source:	Mammalian Cells
Protein Type:	Recombinant
Purification tag / Conjugate:	This NG2 protein is labelled with Fc Tag.

Product Details

Purpose:	Recombinant human CSPG4(1538-2221) Protein with C-terminal human Fc tag
Specificity:	CSPG4 (Gln1538-Asn2221) hFc (Glu99-Ala330)
Characteristics:	Extracellular Domain Protein
Purification:	Purified from cell culture supernatant by affinity chromatography
Purity:	The purity of the protein is greater than 95 % as determined by SDS-PAGE and Coomassie blue staining.

Target Details

Target:	NG2 (MCSP)
Alternative Name:	CSPG4 ( <a href="#">MCSP Products</a> )
Background:	A human melanoma-associated chondroitin sulfate proteoglycan plays a role in stabilizing cell-

## Target Details

substratum interactions during early events of melanoma cell spreading on endothelial basement membranes. CSPG4 represents an integral membrane chondroitin sulfate proteoglycan expressed by human malignant melanoma cells. [provided by RefSeq, Jul 2008]

**Molecular Weight:** predicted molecular mass of 98.9 kDa after removal of the signal peptide. The apparent molecular mass of CSPG4(1538-2221)-hFc is 100-250 kDa due to glycosylation.

**UniProt:** [Q6UVK1](#)

**Pathways:** [Glycosaminoglycan Metabolic Process](#)

## Application Details

**Restrictions:** For Research Use only

## Handling

**Format:** Lyophilized

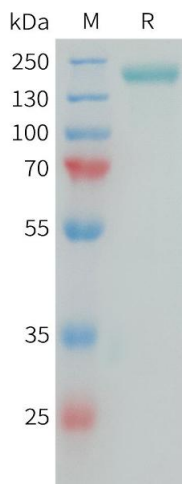
**Buffer:** Lyophilized from sterile PBS, pH 7.4. Normally 5 % - 8 % trehalose is added as protectants before lyophilization.

**Storage:** -20 °C, -80 °C

**Storage Comment:** Store at -20°C to -80°C for 12 months in lyophilized form. After reconstitution, if not intended for use within a month, aliquot and store at -80°C (Avoid repeated freezing and thawing).  
Lyophilized proteins are shipped at ambient temperature.

**Expiry Date:** 12 months

## Images



### SDS-PAGE

**Image 1.** Human C(1538-2221) Protein, hFc Tag on SDS-PAGE under reducing condition.