

Datasheet for ABIN7538393  
**c-MET Protein (AA 25-932) (His tag)**



[Go to Product page](#)

1 Image

## Overview

Quantity:	50 µg
Target:	c-MET (MET)
Protein Characteristics:	AA 25-932
Origin:	Human
Source:	Mammalian Cells
Protein Type:	Recombinant
Purification tag / Conjugate:	This c-MET protein is labelled with His tag.

## Product Details

Purpose:	Recombinant human MET Protein with C-terminal 10xHis tag
Specificity:	MET (Glu25-Thr932) 10xHis tag
Characteristics:	Extracellular Domain Protein
Purification:	Purified from cell culture supernatant by affinity chromatography
Purity:	The purity of the protein is greater than 85 % as determined by SDS-PAGE and Coomassie blue staining.

## Target Details

Target:	c-MET (MET)
Alternative Name:	MET ( <a href="#">MET Products</a> )
Background:	This gene encodes a member of the receptor tyrosine kinase family of proteins and the product

## Target Details

---

of the proto-oncogene MET. The encoded preproprotein is proteolytically processed to generate alpha and beta subunits that are linked via disulfide bonds to form the mature receptor. Further processing of the beta subunit results in the formation of the M10 peptide, which has been shown to reduce lung fibrosis. Binding of its ligand, hepatocyte growth factor, induces dimerization and activation of the receptor, which plays a role in cellular survival, embryogenesis, and cellular migration and invasion. Mutations in this gene are associated with papillary renal cell carcinoma, hepatocellular carcinoma, and various head and neck cancers. Amplification and overexpression of this gene are also associated with multiple human cancers. [provided by RefSeq, May 2016]

---

Molecular Weight: predicted molecular mass of 103.0 kDa after removal of the signal peptide. The apparent molecular mass of MET-His is 70-130 kDa due to glycosylation.

---

UniProt: [P08581](#)

---

Pathways: [RTK Signaling](#), [Carbohydrate Homeostasis](#), [Synaptic Membrane](#), [Signaling of Hepatocyte Growth Factor Receptor](#)

## Application Details

---

Restrictions: For Research Use only

## Handling

---

Format: Lyophilized

---

Buffer: Lyophilized from sterile PBS, pH 7.4. Normally 5 % - 8 % trehalose is added as protectants before lyophilization.

---

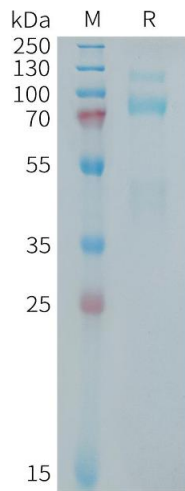
Storage: -20 °C,-80 °C

---

Storage Comment: Store at -20°C to -80°C for 12 months in lyophilized form. After reconstitution, if not intended for use within a month, aliquot and store at -80°C (Avoid repeated freezing and thawing). Lyophilized proteins are shipped at ambient temperature.

---

Expiry Date: 12 months



### SDS-PAGE

**Image 1.** Human MET Protein, His Tag on SDS-PAGE under reducing condition.