

Datasheet for ABIN7538397

## MADCAM1 Protein (AA 19-317) (His tag)



[Go to Product page](#)

### 1 Image

#### Overview

Quantity:	50 µg
Target:	MADCAM1
Protein Characteristics:	AA 19-317
Origin:	Human
Source:	Mammalian Cells
Protein Type:	Recombinant
Purification tag / Conjugate:	This MADCAM1 protein is labelled with His tag.

#### Product Details

Purpose:	Recombinant human MADCAM1 Protein with C-terminal 6xHis tag
Specificity:	MADCAM1 (Gln19-Gln317) 6xHis tag
Characteristics:	Extracellular Domain Protein
Purification:	Purified from cell culture supernatant by affinity chromatography
Purity:	The purity of the protein is greater than 85 % as determined by SDS-PAGE and Coomassie blue staining.

#### Target Details

Target:	MADCAM1
Alternative Name:	MADCAM1 ( <a href="#">MADCAM1 Products</a> )
Background:	The protein encoded by this gene is an endothelial cell adhesion molecule that interacts

## Target Details

preferentially with the leukocyte beta7 integrin LPAM-1 (alpha4beta7), L-selectin, and VLA-4 (alpha4beta1) on myeloid cells to direct leukocytes into mucosal and inflamed tissues. It is a member of the immunoglobulin family and is similar to ICAM1 and VCAM1. At least seven alternatively spliced transcripts encoding different protein isoforms have been found for this gene, but the full-length nature of some variants has not been determined. [provided by RefSeq, Jul 2008]

Molecular Weight: predicted molecular mass of 32.2 kDa after removal of the signal peptide.

UniProt: [Q13477](#)

## Application Details

Restrictions: For Research Use only

## Handling

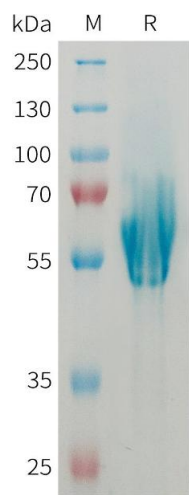
Format: Lyophilized

Buffer: Lyophilized from sterile PBS, pH 7.4. Normally 5 % - 8 % trehalose is added as protectants before lyophilization.

Storage: -20 °C,-80 °C

Storage Comment: Store at -20°C to -80°C for 12 months in lyophilized form. After reconstitution, if not intended for use within a month, aliquot and store at -80°C (Avoid repeated freezing and thawing).  
Lyophilized proteins are shipped at ambient temperature.

Expiry Date: 12 months



SDS-PAGE

**Image 1.** Human MAD Protein, His Tag on SDS-PAGE under reducing condition.