

Datasheet for ABIN7538473

PLA2R1 Protein (AA 21-521, AA 1097-1246) (His tag)



[Go to Product page](#)

1 Image

Overview

Quantity:	50 µg
Target:	PLA2R1
Protein Characteristics:	AA 1097-1246, AA 21-521
Origin:	Human
Source:	Mammalian Cells
Protein Type:	Recombinant
Purification tag / Conjugate:	This PLA2R1 protein is labelled with His tag.

Product Details

Purpose:	Recombinant Human PLA2R1(21-521 1097-1246) Protein with C-terminal 10xHis tag
Specificity:	PLA2R1 (Glu21-Arg521 Glu1097-Leu1246) 10xHis tag
Characteristics:	Extracellular Domain Protein
Purification:	Purified from cell culture supernatant by affinity chromatography
Purity:	The purity of the protein is greater than 85 % as determined by SDS-PAGE and Coomassie blue staining.

Target Details

Target:	PLA2R1
Alternative Name:	PLA2R1 (PLA2R1 Products)
Background:	This gene represents a phospholipase A2 receptor. The encoded protein likely exists as both a

Target Details

transmembrane form and a soluble form. The transmembrane receptor may play a role in clearance of phospholipase A2, thereby inhibiting its action. Polymorphisms at this locus have been associated with susceptibility to idiopathic membranous nephropathy. Alternatively spliced transcript variants encoding different isoforms have been identified.[provided by RefSeq, Sep 2010]

Molecular Weight: predicted molecular mass of 76.0 kDa after removal of the signal peptide. The apparent molecular mass of PLA2R1(21-521 1097-1246)-10xHis is 70-130 kDa due to glycosylation.

UniProt: [Q13018](#)

Pathways: [Positive Regulation of Response to DNA Damage Stimulus](#)

Application Details

Restrictions: For Research Use only

Handling

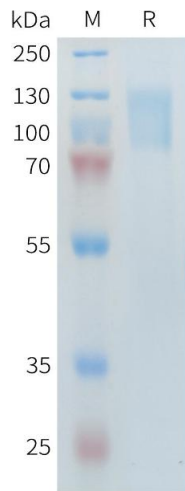
Format: Lyophilized

Buffer: Lyophilized from sterile PBS, pH 7.4. Normally 5 % - 8 % trehalose is added as protectants before lyophilization.

Storage: -20 °C,-80 °C

Storage Comment: Store at -20°C to -80°C for 12 months in lyophilized form. After reconstitution, if not intended for use within a month, aliquot and store at -80°C (Avoid repeated freezing and thawing).
Lyophilized proteins are shipped at ambient temperature.

Expiry Date: 12 months



SDS-PAGE

Image 1. Human R1(21-521 1097-1246) Protein, His Tag on SDS-PAGE under reducing condition.