

Datasheet for ABIN7538485

**Prolactin Receptor Protein (PRLR) (AA 25-234) (His tag)**[Go to Product page](#)**1** Image

## Overview

Quantity:	50 µg
Target:	Prolactin Receptor (PRLR)
Protein Characteristics:	AA 25-234
Origin:	Human
Source:	Mammalian Cells
Protein Type:	Recombinant
Purification tag / Conjugate:	This Prolactin Receptor protein is labelled with His tag.

## Product Details

Purpose:	Recombinant human PRLR Protein with C-terminal 10xHis tag
Specificity:	PRLR (Gln25-Asp234) 10xHis tag
Characteristics:	Extracellular Domain Protein
Purification:	Purified from cell culture supernatant by affinity chromatography
Purity:	The purity of the protein is greater than 85 % as determined by SDS-PAGE and Coomassie blue staining.

## Target Details

Target:	Prolactin Receptor (PRLR)
Alternative Name:	PRLR ( <a href="#">PRLR Products</a> )
Background:	This gene encodes a receptor for the anterior pituitary hormone, prolactin, and belongs to the

## Target Details

---

type I cytokine receptor family. Prolactin-dependent signaling occurs as the result of ligand-induced dimerization of the prolactin receptor. Several alternatively spliced transcript variants encoding different membrane-bound and soluble isoforms have been described for this gene, which may function to modulate the endocrine and autocrine effects of prolactin in normal tissue and cancer. [provided by RefSeq, Feb 2011]

Molecular Weight: predicted molecular mass of 25.8 kDa after removal of the signal peptide. The apparent molecular mass of PRLR-His is 25-35 kDa due to glycosylation.

UniProt: [P16471](#)

Pathways: [JAK-STAT Signaling](#), [Response to Growth Hormone Stimulus](#)

## Application Details

---

Restrictions: For Research Use only

## Handling

---

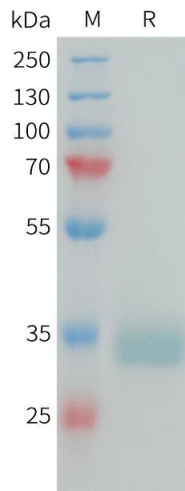
Format: Lyophilized

Buffer: Lyophilized from sterile PBS, pH 7.4. Normally 5 % - 8 % trehalose is added as protectants before lyophilization.

Storage: -20 °C,-80 °C

Storage Comment: Store at -20°C to -80°C for 12 months in lyophilized form. After reconstitution, if not intended for use within a month, aliquot and store at -80°C (Avoid repeated freezing and thawing). Lyophilized proteins are shipped at ambient temperature.

Expiry Date: 12 months



### SDS-PAGE

**Image 1.** Human PRLR Protein, His Tag on SDS-PAGE under reducing condition.