

Datasheet for ABIN753853  
**anti-ECT2 antibody (AA 781-883)**[Go to Product page](#)

1 Image

2 Publications

## Overview

Quantity:	100 µL
Target:	ECT2
Binding Specificity:	AA 781-883
Reactivity:	Human, Rat
Host:	Rabbit
Clonality:	Polyclonal
Conjugate:	This ECT2 antibody is un-conjugated
Application:	Western Blotting (WB), ELISA, Immunofluorescence (Cultured Cells) (IF (cc)), Immunofluorescence (Paraffin-embedded Sections) (IF (p)), Immunohistochemistry (Paraffin- embedded Sections) (IHC (p)), Immunohistochemistry (Frozen Sections) (IHC (fro))

## Product Details

Immunogen:	KLH conjugated synthetic peptide derived from human ECT2
Isotype:	IgG
Cross-Reactivity:	Human, Rat
Predicted Reactivity:	Mouse,Dog,Cow,Chicken,Rabbit
Purification:	Purified by Protein A.

## Target Details

Target:	ECT2
---------	------

## Target Details

Alternative Name:	ECT2 ( <a href="#">ECT2 Products</a> )
Background:	<p>Synonyms: ARHGEF31, Protein ECT2, Epithelial cell-transforming sequence 2 oncogene, ECT2</p> <p>Background: Guanine nucleotide exchange factor (GEF) that catalyzes the exchange of GDP for GTP. Promotes guanine nucleotide exchange on the Rho family members of small GTPases, like RHOA, RHOC, RAC1 and CDC42. Required for signal transduction pathways involved in the regulation of cytokinesis. Component of the centralspindlin complex that serves as a microtubule-dependent and Rho-mediated signaling required for the myosin contractile ring formation during the cell cycle cytokinesis. Regulates the translocation of RHOA from the central spindle to the equatorial region. Plays a role in the control of mitotic spindle assembly, regulates the activation of CDC42 in metaphase for the process of spindle fibers attachment to kinetochores before chromosome congression. Involved in the regulation of epithelial cell polarity, participates in the formation of epithelial tight junctions in a polarity complex PARD3-PARD6-protein kinase PRKCQ-dependent manner. Plays a role in the regulation of neurite outgrowth. Inhibits phenobarbital (PB)-induced NR1I3 nuclear translocation. Stimulates the activity of RAC1 through its association with the oncogenic PARD6A-PRKCI complex in cancer cells, thereby acting to coordinately drive tumor cell proliferation and invasion. Also stimulates genotoxic stress-induced RHOB activity in breast cancer cells leading to their cell death.</p>
Gene ID:	1894
UniProt:	<a href="#">Q9H8V3</a>
Pathways:	<a href="#">Neurotrophin Signaling Pathway</a> , <a href="#">Cell-Cell Junction Organization</a>

## Application Details

Application Notes:	WB 1:300-5000 ELISA 1:500-1000 IHC-P 1:200-400 IHC-F 1:100-500 IF(IHC-P) 1:50-200 IF(IHC-F) 1:50-200 IF(ICC) 1:50-200
Restrictions:	For Research Use only

## Handling

Format:	Liquid
---------	--------

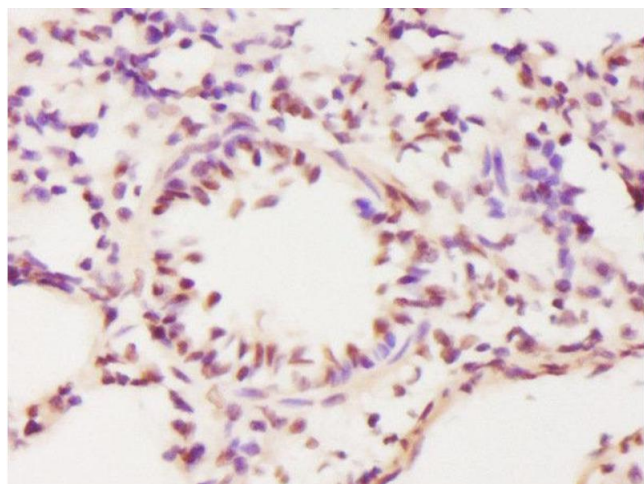
## Handling

Concentration:	1 µg/µL
Buffer:	0.01M TBS( pH 7.4) with 1 % BSA, 0.02 % Proclin300 and 50 % Glycerol.
Preservative:	ProClin
Precaution of Use:	This product contains ProClin: a POISONOUS AND HAZARDOUS SUBSTANCE, which should be handled by trained staff only.
Storage:	4 °C,-20 °C
Storage Comment:	Shipped at 4°C. Store at -20°C for one year. Avoid repeated freeze/thaw cycles.
Expiry Date:	12 months

## Publications

- Product cited in:
- Wang, Yan, Liu: "Clinical significance of ECT2 expression in tissue and serum of gastric cancer patients." in: **Clinical & translational oncology : official publication of the Federation of Spanish Oncology Societies and of the National Cancer Institute of Mexico**, Vol. 18, Issue 7, pp. 735-42, (2016) ([PubMed](#)).
- Guo, Chen, Du, Zhu, Lai, Dong, Wu, Lin, Liu, Huang: "Elevated levels of epithelial cell transforming sequence 2 predicts poor prognosis for prostate cancer." in: **Medical oncology (Northwood, London, England)**, Vol. 34, Issue 1, pp. 13, (2016) ([PubMed](#)).

## Images



### Immunohistochemistry (Paraffin-embedded Sections)

**Image 1.** Formalin-fixed and paraffin embedded human lung labeled with Anti-ECT2 Polyclonal Antibody, Unconjugated at 1:300 followed by conjugation to the secondary antibody and DAB staining.