

Datasheet for ABIN7538590

WFDC1 Protein (AA 32-220) (Fc Tag)[Go to Product page](#)**1** Image

Overview

Quantity:	50 µg
Target:	WFDC1
Protein Characteristics:	AA 32-220
Origin:	Human
Source:	Mammalian Cells
Protein Type:	Recombinant
Purification tag / Conjugate:	This WFDC1 protein is labelled with Fc Tag.

Product Details

Purpose:	Recombinant Human WFDC1 Protein with C-terminal human Fc tag
Specificity:	WFDC1 (Lys32-Gln220) hFc (Glu99-Ala330)
Characteristics:	Extracellular Domain Protein
Purification:	Purified from cell culture supernatant by affinity chromatography
Purity:	The purity of the protein is greater than 95 % as determined by SDS-PAGE and Coomassie blue staining.

Target Details

Target:	WFDC1
Alternative Name:	WFDC1 (WFDC1 Products)
Background:	This gene encodes a member of the WAP-type four disulfide core domain family. The WAP-type

Target Details

four-disulfide core domain contains eight cysteines forming four disulfide bonds at the core of the protein, and functions as a protease inhibitor in many family members. This gene is mapped to chromosome 16q24, an area of frequent loss of heterozygosity in cancers, including prostate, breast and hepatocellular cancers and Wilms' tumor. This gene is downregulated in many cancer types and may be involved in the inhibition of cell proliferation. The encoded protein may also play a role in the susceptibility of certain CD4 memory T cells to human immunodeficiency virus infection. Alternative splicing results in multiple transcript variants. [provided by RefSeq, Sep 2013]

Molecular Weight: predicted molecular mass of 46.9 kDa after removal of the signal peptide. The apparent molecular mass of WFDC1-hFc is 55-70 kDa due to glycosylation.

UniProt: [Q9HC57](#)

Application Details

Restrictions: For Research Use only

Handling

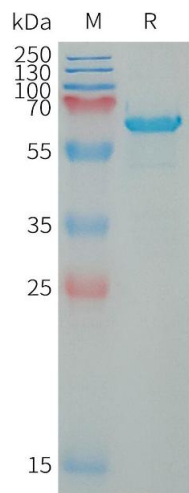
Format: Lyophilized

Buffer: Lyophilized from sterile PBS, pH 7.4. Normally 5 % - 8 % trehalose is added as protectants before lyophilization.

Storage: -20 °C, -80 °C

Storage Comment: Store at -20°C to -80°C for 12 months in lyophilized form. After reconstitution, if not intended for use within a month, aliquot and store at -80°C (Avoid repeated freezing and thawing).
Lyophilized proteins are shipped at ambient temperature.

Expiry Date: 12 months



SDS-PAGE

Image 1. Human W Protein, hFc Tag on SDS-PAGE under reducing condition.