

Datasheet for ABIN7538754

**anti-ALCAM (Praluzatamab Biosimilar) antibody**[Go to Product page](#)**1** Image

## Overview

Quantity:	50 µg
Target:	ALCAM (Praluzatamab Biosimilar)
Reactivity:	Human
Host:	Humanized
Clonality:	Monoclonal
Application:	Flow Cytometry (FACS)

## Product Details

Purpose:	Anti-CD166(praluzatamab biosimilar) mAb
Isotype:	IgG1
Characteristics:	CX-191
Grade:	Research Grade

## Target Details

Target:	ALCAM (Praluzatamab Biosimilar)
Background:	ALCAM, MEMD
UniProt:	<a href="#">Q13740</a>

## Application Details

Application Notes:	Optimal working dilution should be determined by the investigator.
--------------------	--------------------------------------------------------------------

## Application Details

Restrictions: For Research Use only

## Handling

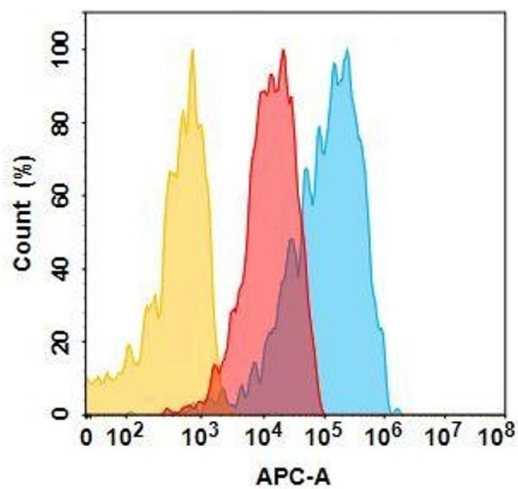
Buffer: Lyophilized from sterile PBS, pH 7.4. Normally 5 % - 8 % trehalose is added as protectants before lyophilization.

Storage: -20 °C,-80 °C

Storage Comment: Store at -20°C to -80°C for 12 months in lyophilized form. After reconstitution, if not intended for use within a month, aliquot and store at -80°C (Avoid repeated freezing and thawing).  
Lyophilized proteins are shipped at ambient temperature.

Expiry Date: 12 months

## Images



### Flow Cytometry

**Image 1.** CD166 protein is highly expressed on the surface of Expi293 cell membrane. Flow cytometry analysis with 15 µg/mL Anti-CD166(praluzatamab biosimilar) mAb ((ABIN7538754)) on Expi293 cells transfected with Human CD166 (Blue histogram) or Expi293 transfected with irrelevant protein (Red histogram),and Isotype antibody on Expi293 transfected with irrelevant protein (Orange histogram).