

Datasheet for ABIN7538756
anti-CALCRL (Erenumab Biosimilar) antibody



[Go to Product page](#)

1 Image

Overview

Quantity:	50 µg
Target:	CALCRL (Erenumab Biosimilar)
Reactivity:	Human
Host:	Human
Clonality:	Monoclonal
Application:	Flow Cytometry (FACS)

Product Details

Purpose:	Anti-CGRPR(Erenumab biosimilar) mAb
Isotype:	IgG2
Characteristics:	AMG 334,AMG-334,erenumab-aooe
Grade:	Research Grade

Target Details

Target:	CALCRL (Erenumab Biosimilar)
Background:	CALCRL
UniProt:	Q16602

Application Details

Application Notes:	Optimal working dilution should be determined by the investigator.
--------------------	--

Application Details

Restrictions: For Research Use only

Handling

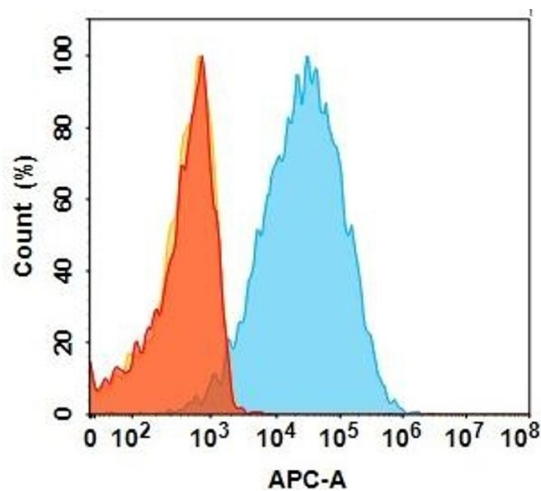
Buffer: Lyophilized from sterile PBS, pH 7.4. Normally 5 % - 8 % trehalose is added as protectants before lyophilization.

Storage: -20 °C,-80 °C

Storage Comment: Store at -20°C to -80°C for 12 months in lyophilized form. After reconstitution, if not intended for use within a month, aliquot and store at -80°C (Avoid repeated freezing and thawing).
Lyophilized proteins are shipped at ambient temperature.

Expiry Date: 12 months

Images



Flow Cytometry

Image 1. Flow cytometry analysis with 1µg/mL Anti-CGRPR(Erenumab biosimilar) mAb ((ABIN7538756)) on Expi293 cells transfected with Human CGRPR&R protein (Blue histogram) and Expi293 transfected with Human CGRPR protein (Red histogram)) or Human R protein(Orange histogram).