

Datasheet for ABIN7538757

anti-CD3E, MS4A1 (Mosunetuzumab Biosimilar) antibody[Go to Product page](#)**1** Image

Overview

Quantity:	50 µg
Target:	CD3E, MS4A1 (Mosunetuzumab Biosimilar)
Reactivity:	Human
Host:	Humanized
Clonality:	Monoclonal
Conjugate:	This CD3E, MS4A1 (Mosunetuzumab Biosimilar) antibody is un-conjugated
Application:	Flow Cytometry (FACS)

Product Details

Purpose:	Anti-CD3E(mosunetuzumab biosimilar) mAb
Isotype:	IgG1
Characteristics:	BTCT4465A, RG-7828, R07030816
Grade:	Research Grade

Target Details

Target:	CD3E, MS4A1 (Mosunetuzumab Biosimilar)
Background:	CD3e, T3E

Application Details

Application Notes:	Optimal working dilution should be determined by the investigator.
--------------------	--

Application Details

Restrictions: For Research Use only

Handling

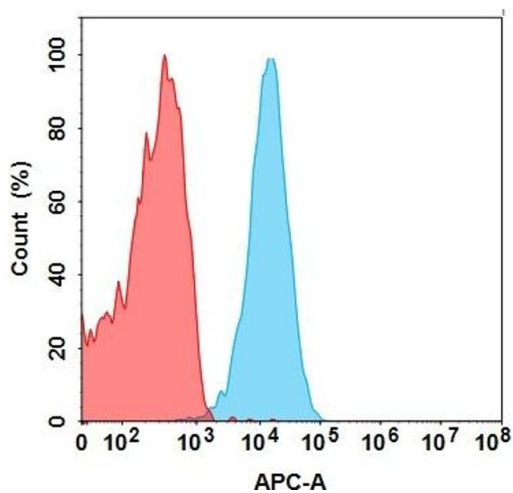
Buffer: Lyophilized from sterile PBS, pH 7.4. Normally 5 % - 8 % trehalose is added as protectants before lyophilization.

Storage: -20 °C,-80 °C

Storage Comment: Store at -20°C to -80°C for 12 months in lyophilized form. After reconstitution, if not intended for use within a month, aliquot and store at -80°C (Avoid repeated freezing and thawing).Lyophilized antibodies are shipped at ambient temperature.

Expiry Date: 12 months

Images



Flow Cytometry

Image 1. CD3E protein is highly expressed inside Jurkat cells. Flow cytometry analysis with 1 µg/mL Anti-CD3E(mosunetuzumab biosimilar) mAb ((ABIN7538757)) (Blue histogram) or isotype control mAb (Red histogram) on Jurkat cells.