

Datasheet for ABIN7538766

anti-IGF1R (Teprotumumab Biosimilar) antibody (Glu239Asp-Mutant, Met241Leu-Mutant)[Go to Product page](#)**1** Image

Overview

Quantity:	50 µg
Target:	IGF1R (Teprotumumab Biosimilar)
Binding Specificity:	Glu239Asp-Mutant, Met241Leu-Mutant
Reactivity:	Human
Host:	Human
Clonality:	Monoclonal
Application:	Flow Cytometry (FACS)

Product Details

Purpose:	Anti-IGF-1R(teprotumumab biosimilar) mAb
Isotype:	IgG1
Characteristics:	R04858696-000,teprotumumab-trbw
Grade:	Research Grade

Target Details

Target:	IGF1R (Teprotumumab Biosimilar)
Alternative Name:	IGF-1R (Teprotumumab Biosimilar)
Target Type:	Biosimilar
Background:	CD221, IGFIR, IGFR, JTK13

Application Details

Application Notes: Optimal working dilution should be determined by the investigator.

Restrictions: For Research Use only

Handling

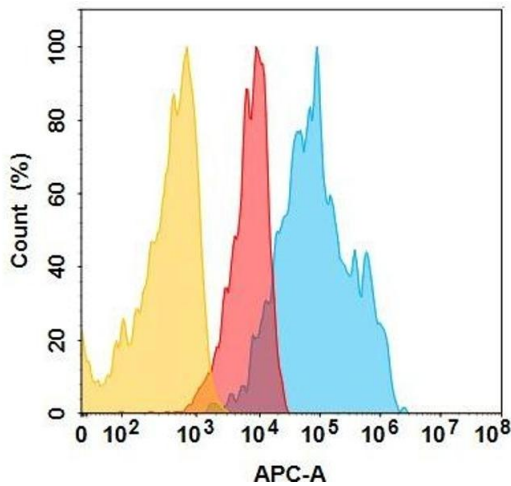
Buffer: Lyophilized from sterile PBS, pH 7.4. Normally 5 % - 8 % trehalose is added as protectants before lyophilization.

Storage: -20 °C,-80 °C

Storage Comment: Store at -20°C to -80°C for 12 months in lyophilized form. After reconstitution, if not intended for use within a month, aliquot and store at -80°C (Avoid repeated freezing and thawing).Lyophilized antibodies are shipped at ambient temperature.

Expiry Date: 12 months

Images



Flow Cytometry

Image 1. IGF-1R protein is highly expressed on the surface of Expi293 cell membrane. Flow cytometry analysis with 1 μ g/mL Anti-IGF-1R(teprotumumab biosimilar) mAb ((ABIN7538766)) on Expi293 cells transfected with human IGF-1R (Blue histogram) or Expi293 transfected with irrelevant protein (Red histogram),and Isotype antibody on Expi293 transfected with irrelevant protein (Orange histogram).