

Datasheet for ABIN7538828
anti-Myotilin antibody (C-Term)



[Go to Product page](#)

2 Images

Overview

Quantity:	1 mL
Target:	Myotilin (MYOT)
Binding Specificity:	C-Term
Reactivity:	Human
Host:	Mouse
Clonality:	Monoclonal
Application:	Immunohistochemistry (IHC), Immunohistochemistry (Paraffin-embedded Sections) (IHC (p)), Immunohistochemistry (Frozen Sections) (IHC (fro))

Product Details

Purpose:	Lyophilized Mouse Monoclonal Antibody Myotilin
Immunogen:	Prokaryotic recombinant protein corresponding to a C-terminal region of 266 amino acids of the human myotilin molecule.
Clone:	RS034
Isotype:	IgG1, kappa
Specificity:	Human myotilin
Purification:	Tissue culture supernatant

Target Details

Target:	Myotilin (MYOT)
---------	-----------------

Target Details

Alternative Name: Myotilin ([MYOT Products](#))

Application Details

Application Notes: Immunohistochemistry: Typical working dilution on frozen sections 1:20. 60 minutes primary antibody incubation at 25°C. Standard ABC technique. Typical working dilution on paraffin sections 1:40-1:80. High temperature antigen unmasking technique. 60 minutes primary antibody incubation at 25°C. Standard ABC technique. Western Blotting: Not recommended.

Restrictions: For Research Use only

Handling

Format: Lyophilized

Reconstitution: Reconstitute with the volume of sterile distilled water indicated on the vial label.

Buffer: Lyophilized tissue culture supernatant containing 15 mM sodium azide.

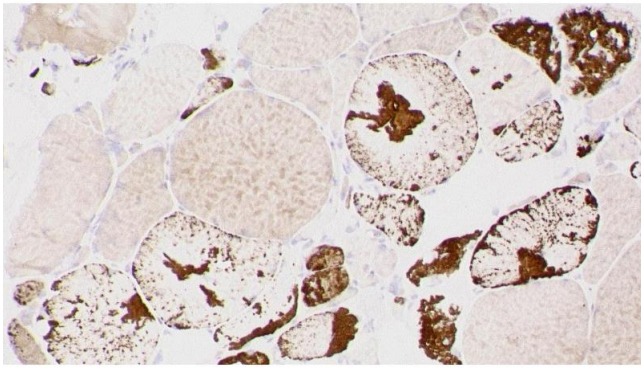
Preservative: Sodium azide

Precaution of Use: This product contains Sodium azide: a POISONOUS AND HAZARDOUS SUBSTANCE which should be handled by trained staff only.

Storage: 4 °C

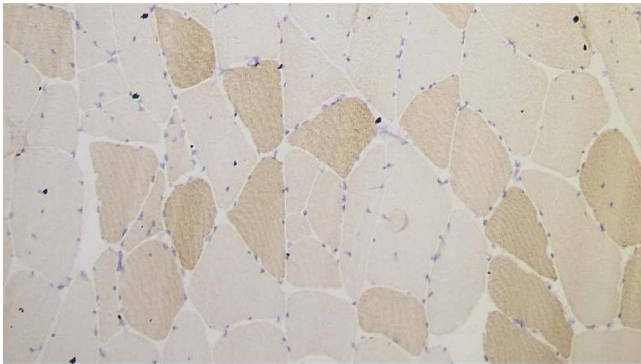
Storage Comment: Store at 2-8 °C. Do not freeze. Return to 2-8 °C immediately after use. Do not use after expiration date indicated on the vial label. Storage conditions other than those specified above must be verified by the user.

Expiry Date: 12 months



Immunohistochemistry

Image 1.



Immunohistochemistry

Image 2. Human skeletal muscle: immunohistochemical staining for Myotilin. Note sarcoplasmic staining of normal muscle fibers (A) and presence of protein aggregates (B).
Myotilin: clone RS034