

Datasheet for ABIN7538831

anti-Retinoblastoma Protein (Rb) antibody (N-Term)[Go to Product page](#)**1** Image

Overview

Quantity:	1 mL
Target:	Retinoblastoma Protein (Rb) (Rb Protein)
Binding Specificity:	N-Term
Reactivity:	Human
Host:	Mouse
Clonality:	Monoclonal
Conjugate:	This Retinoblastoma Protein (Rb) antibody is un-conjugated
Application:	Western Blotting (WB), Immunohistochemistry (IHC)

Product Details

Purpose:	Liquid Mouse Monoclonal Antibody Retinoblastoma Gene Protein
Immunogen:	Recombinant prokaryotic protein corresponding to a portion of the N-terminal region of the retinoblastoma gene product.
Clone:	13A10
Isotype:	IgG1
Specificity:	Human retinoblastoma gene protein (105 kDa).
Purification:	Tissue culture supernatant

Target Details

Target:	Retinoblastoma Protein (Rb) (Rb Protein)
---------	--

Target Details

Alternative Name: Retinoblastoma Gene Protein ([Rb Protein Products](#))

Pathways: [Mitotic G1-G1/S Phases](#)

Application Details

Application Notes: Immunohistochemistry: Typical working dilution 1:25-1:50. High temperature antigen unmasking technique. 60 minutes primary antibody incubation at 25°C. Standard ABC technique. Western Blotting: Typical working dilution 1:250.

Restrictions: For Research Use only

Handling

Format: Liquid

Buffer: Liquid tissue culture supernatant containing 15 mM sodium azide.

Preservative: Sodium azide

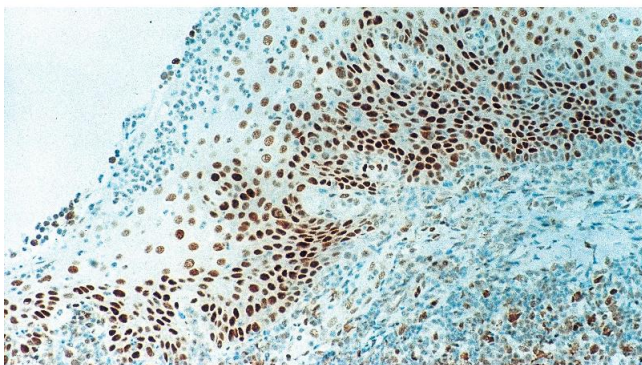
Precaution of Use: This product contains Sodium azide: a POISONOUS AND HAZARDOUS SUBSTANCE which should be handled by trained staff only.

Storage: 4 °C

Storage Comment: Store at 2-8 °C. Do not freeze. Return to 2-8 °C immediately after use. Do not use after expiration date indicated on the vial label. Storage conditions other than those specified above must be verified by the user.

Expiry Date: 12 months

Images



Immunohistochemistry

Image 1. Human tonsil: immunohistochemical staining for Retinoblastoma Gene Protein. Note intense nuclear staining of epithelial cells. Retinoblastoma Gene Protein: clone 13A10