

Datasheet for ABIN7538876

anti-ANO1 antibody (C-Term, Cytoplasmic Domain)[Go to Product page](#)**1** Image

Overview

Quantity:	1 mL
Target:	ANO1
Binding Specificity:	C-Term, Cytoplasmic Domain
Reactivity:	Human
Host:	Mouse
Clonality:	Monoclonal
Conjugate:	This ANO1 antibody is un-conjugated
Application:	Immunohistochemistry (IHC), Immunohistochemistry (Paraffin-embedded Sections) (IHC (p)), Heat-induced Epitope Retrieval (HIER)

Product Details

Purpose:	Liquid Mouse Monoclonal Antibody DOG-1
Immunogen:	Prokaryotic recombinant protein corresponding to part of the C-terminus of the cytoplasmic domain of the human DOG-1 molecule.
Clone:	K9
Isotype:	IgG2b
Specificity:	Human DOG-1.
Characteristics:	This product is intended for the qualitative identification by light microscopy of human DOG-1 in paraffin sections.
Purification:	Tissue culture supernatant

Target Details

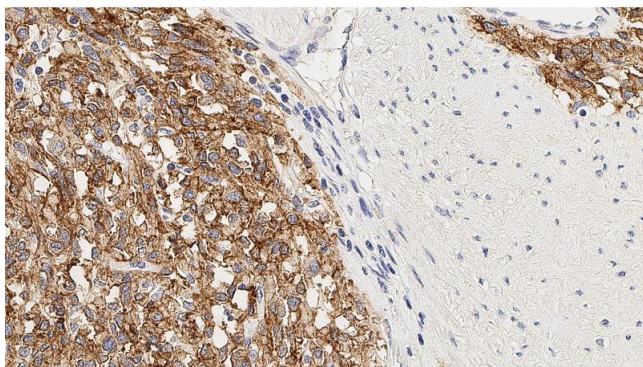
Target:	ANO1
Alternative Name:	DOG-1 (ANO1 Products)

Application Details

Application Notes:	Immunohistochemistry on paraffin sections. Heat Induced Epitope Retrieval (HIER): Epitope Retrieval Solution pH 6. Suggested dilution: 1:50 for 30 minutes at 25 °C. This is provided as a guide and users should determine their own optimal working dilutions. Technical note: The use of PBS based diluents may result in increased background staining. Immunohistochemical (IHC) staining techniques allow for the visualization of antigens via the sequential application of a specific antibody to the antigen (primary antibody), a secondary antibody to the primary antibody and an enzyme complex with a chromogenic substrate with interposed washing steps. The enzymatic activation of the chromogen results in a visible reaction product at the antigen site. The specimen may then be counterstained and coverslipped. Results are interpreted using a light microscope.
Restrictions:	For Research Use only

Handling

Format:	Liquid
Concentration:	12 mg/L
Buffer:	This product is a liquid tissue culture supernatant containing sodium azide as a preservative.
Preservative:	Sodium azide
Precaution of Use:	This product contains Sodium azide: a POISONOUS AND HAZARDOUS SUBSTANCE which should be handled by trained staff only.
Storage:	4 °C
Storage Comment:	Store at 2-8 °C. Do not freeze. Return to 2-8 °C immediately after use. Do not use after expiration date indicated on the vial label. Storage conditions other than those specified above must be verified by the user.
Expiry Date:	12 months



Immunohistochemistry

Image 1. Human colon, gastrointestinal stromal tumor: immunohistochemical staining for DOG-1. Note membrane staining of neoplastic cells. DOG-1: clone K9