

Datasheet for ABIN7538910

anti-Merosin Laminin alpha 2 Chain antibody



[Go to Product page](#)

1 Image

Overview

Quantity:	1 mL
Target:	Merosin Laminin alpha 2 Chain
Reactivity:	Human
Host:	Mouse
Clonality:	Monoclonal
Application:	Immunohistochemistry (IHC), Immunohistochemistry (Frozen Sections) (IHC (fro))

Product Details

Purpose:	Lyophilized Mouse Monoclonal Antibody Merosin Laminin Alpha 2 Chain
Immunogen:	Purified protein from placenta.
Clone:	Mer3-22B2
Isotype:	IgG1, kappa
Specificity:	Reacts strongly with laminin alpha 2 chain of merosin in human and rabbit skeletal muscle. No reaction is observed in muscle sections from mouse, rat, dog, chicken, hamster or pig.
Characteristics:	This product is intended for the qualitative identification by light microscopy of Merosin Laminin Alpha 2 Chain by immunohistochemistry.
Purification:	Tissue culture supernatant

Target Details

Target:	Merosin Laminin alpha 2 Chain
---------	-------------------------------

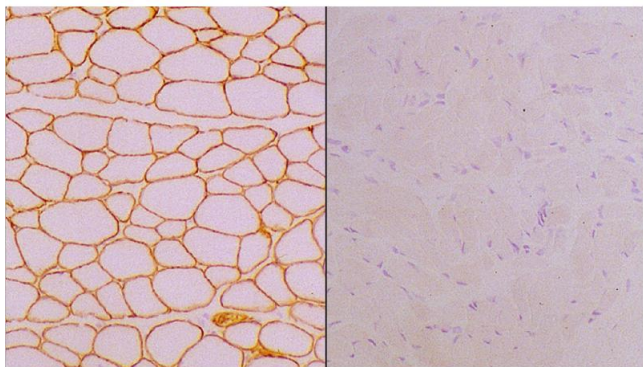
Application Details

Application Notes:	Immunohistochemistry on frozen sections. Suggested dilution: 1:50-1:100 for 60 minutes at 25°C. This is provided as a guide and users should determine their own optimal working dilutions. Immunohistochemical (IHC) staining techniques allow for the visualization of antigens via the sequential application of a specific antibody to the antigen (primary antibody), a secondary antibody to the primary antibody and an enzyme complex with a chromogenic substrate with interposed washing steps. The enzymatic activation of the chromogen results in a visible reaction product at the antigen site. The specimen may then be counterstained and coverslipped. Results are interpreted using a light microscope.
--------------------	--

Restrictions:	For Research Use only
---------------	-----------------------

Handling

Format:	Lyophilized
Reconstitution:	The user is required to reconstitute the contents of the vial with the correct volume of sterile distilled water as indicated on the vial label.
Concentration:	17 mg/L
Buffer:	This product is a lyophilized tissue culture supernatant containing sodium azide as a preservative.
Preservative:	Sodium azide
Precaution of Use:	This product contains Sodium azide: a POISONOUS AND HAZARDOUS SUBSTANCE which should be handled by trained staff only.
Storage:	4 °C
Storage Comment:	Store at 2-8 °C. Do not freeze. Return to 2-8 °C immediately after use. Do not use after expiration date indicated on the vial label. Storage conditions other than those specified above must be verified by the user.
Expiry Date:	12 months



Immunohistochemistry

Image 1. Human skeletal muscle: immunohistochemical staining for Merosin. Note membrane staining of normal muscle fibers (A) and absence of staining of muscle fibers (B). Frozen sections. Photographs supplied courtesy of Dr Louise V B Anderson. Merosin Laminin Alpha 2 Chain: clone Mer3/22B2