

Datasheet for ABIN7538912
anti-MSH2 antibody

2 Images



[Go to Product page](#)

Overview

Quantity:	1 mL
Target:	MSH2
Reactivity:	Human
Host:	Mouse
Clonality:	Monoclonal
Application:	Immunohistochemistry (IHC), Immunohistochemistry (Paraffin-embedded Sections) (IHC (p)), Heat-induced Epitope Retrieval (HIER)

Product Details

Purpose:	Liquid Mouse Monoclonal Antibody Mismatch Repair Protein (MLH1)
Immunogen:	Prokaryotic recombinant protein corresponding to 210 amino acids of human MLH1.
Clone:	ES05
Isotype:	IgG1
Specificity:	Human Mismatch Repair Protein (MLH1) molecule.
Characteristics:	This product is intended for the qualitative identification by light microscopy of Mismatch Repair Protein (MLH1) molecules in paraffin sections.
Purification:	Tissue culture supernatant

Target Details

Target:	MSH2
---------	------

Target Details

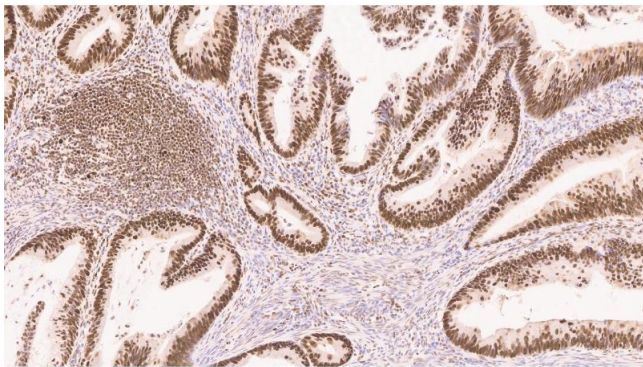
Alternative Name:	Mismatch Repair Protein (MSH2 Products)
Pathways:	DNA Damage Repair, Production of Molecular Mediator of Immune Response

Application Details

Application Notes:	Heat Induced Epitope Retrieval (HIER): Epitope Retrieval Solution pH 6. Suggested dilution: 1:50 for 30 minutes at 25 °C. This is provided as a guide and users should determine their own optimal working dilutions. The performance of this antibody should be validated when utilized with other manual staining systems or automated platforms. Immunohistochemical (IHC) staining techniques allow for the visualization of antigens via the sequential application of a specific antibody to the antigen (primary antibody), a secondary antibody to the primary antibody and an enzyme complex with a chromogenic substrate with interposed washing steps. The enzymatic activation of the chromogen results in a visible reaction product at the antigen site. The specimen may then be counterstained and coverslipped. Results are interpreted using a light microscope.
Restrictions:	For Research Use only

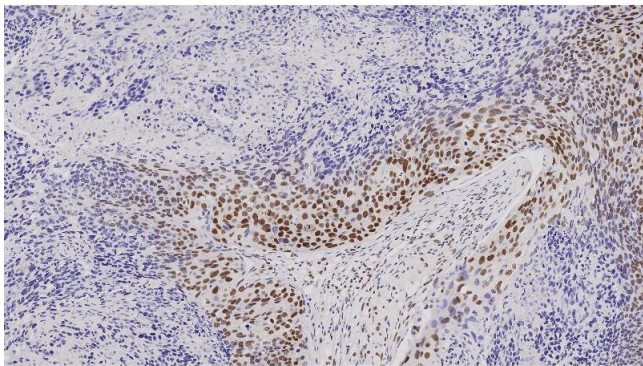
Handling

Format:	Liquid
Concentration:	165 mg/L
Buffer:	This product is a liquid tissue culture supernatant containing sodium azide as a preservative.
Preservative:	Sodium azide
Precaution of Use:	This product contains Sodium azide: a POISONOUS AND HAZARDOUS SUBSTANCE which should be handled by trained staff only.
Storage:	4 °C
Storage Comment:	Store at 2-8 °C. Do not freeze. Return to 2-8 °C immediately after use. Do not use after expiration date indicated on the vial label. Storage conditions other than those specified above must be verified by the user.
Expiry Date:	12 months



Immunohistochemistry

Image 1.



Immunohistochemistry

Image 2. Human squamous cell carcinoma: immunohistochemical staining for mismatch repair protein (MLH1). Note nuclear staining in a high proportion of malignant cells. Mismatch Repair Protein (MLH1): clone ES05