

Datasheet for ABIN7539980

Adrenomedullin Protein (ADM) (AA 45-92) (His-SUMO Tag)



[Go to Product page](#)

1 Image

Overview

Quantity:	100 µg
Target:	Adrenomedullin (ADM)
Protein Characteristics:	AA 45-92
Origin:	Human
Source:	Escherichia coli (E. coli)
Protein Type:	Recombinant
Purification tag / Conjugate:	This Adrenomedullin protein is labelled with His-SUMO Tag.
Application:	SDS-PAGE (SDS)

Product Details

Sequence:	ELRMSSSYPT GLADVKAGPA QTLIRPQDMK GASRSPEDSS PDAARIRV
Purification:	SDS-PAGE
Purity:	> 90 %

Target Details

Target:	Adrenomedullin (ADM)
Alternative Name:	ADML (ADM Products)
Background:	AM and PAMP are potent hypotensive and vasodilator agents. Numerous actions have been reported most related to the physiologic control of fluid and electrolyte homeostasis. In the kidney, am is diuretic and natriuretic, and both am and pamp inhibit aldosterone secretion by direct adrenal actions. In pituitary gland, both peptides at physiologically relevant doses inhibit

Target Details

	basal ACTH secretion. Both peptides appear to act in brain and pituitary gland to facilitate the loss of plasma volume, actions which complement their hypotensive effects in blood vessels.
Molecular Weight:	21.1 kDa
UniProt:	P35318
Pathways:	Hormone Transport , Hormone Activity , C21-Steroid Hormone Metabolic Process , cAMP Metabolic Process , Myometrial Relaxation and Contraction , Regulation of G-Protein Coupled Receptor Protein Signaling , Tube Formation

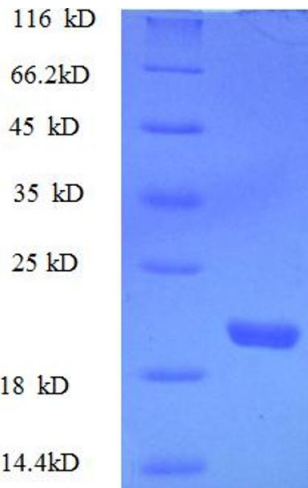
Application Details

Application Notes:	Optimal working dilution should be determined by the investigator.
Restrictions:	For Research Use only

Handling

Format:	Liquid
Concentration:	0.1-2 mg/mL
Buffer:	20 mM Tris-HCl based buffer, pH 8.0
Storage:	-80 °C, 4 °C, -20 °C
Storage Comment:	Store at -20°C, for extended storage, conserve at -20°C or -80°C. Repeated freezing and thawing is not recommended. Store working aliquots at 4°C for up to one week.

Images



SDS-PAGE

Image 1.