

Datasheet for ABIN7540238

Betacellulin Protein (BTC) (AA 1-178) (GST tag)[Go to Product page](#)**1** Image

Overview

Quantity:	2 µg
Target:	Betacellulin (BTC)
Protein Characteristics:	AA 1-178
Origin:	Human
Source:	Wheat germ
Protein Type:	Recombinant
Purification tag / Conjugate:	This Betacellulin protein is labelled with GST tag.
Application:	Western Blotting (WB), ELISA, Antibody Array (AA), Affinity Purification (AP)

Product Details

Purpose:	BTC (Human) Recombinant Protein (P01)
Sequence:	MDRAARCSGA SSLPLLLALA LGLVILHCVV ADGNSTRSPE TNGLLCGDPE ENCAATTTQS KRKGHFSRCP KQYKHYCIKG RCRFVVAEQT PSCVCDEGYI GARCERVDLF YLRGDRGQIL VICMIAVMVV FIILVIGVCT CCHPLRKRRK RKKKEEMET LGKDITPINE DIEETNIA
Characteristics:	Human BTC full-length ORF (AAH11618, 1 a.a. - 178 a.a.) recombinant protein with GST-tag at N-terminal.
Purification:	in vitro wheat germ expression system

Target Details

Target:	Betacellulin (BTC)
Alternative Name:	BTC (BTC Products)

Target Details

Background: Full Gene Name: betacellulin
Synonyms:

Gene ID: 685

Pathways: [RTK Signaling](#), [Fc-epsilon Receptor Signaling Pathway](#), [EGFR Signaling Pathway](#), [Neurotrophin Signaling Pathway](#)

Application Details

Application Notes: Optimal working dilution should be determined by the investigator.

Comment: Preparation method: in vitro, wheat germ expression system
Product Quality tested by: 12.5% SDS-PAGE Stained with Coomassie Blue.

Restrictions: For Research Use only

Handling

Buffer: 50 mM Tris-HCl, 10 mM reduced Glutathione, pH =8.0 in the elution buffer.

Handling Advice: Aliquot to avoid repeated freezing and thawing.

Storage: -80 °C

Storage Comment: Best use within three months from the date of receipt of this protein.

Images

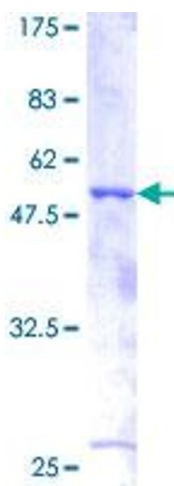


Image 1.