

Datasheet for ABIN7540240

**anti-Clathrin Heavy Chain (CLTC) (AA 232-340) antibody**[Go to Product page](#)**3** Images

## Overview

Quantity:	50 µg
Target:	Clathrin Heavy Chain (CLTC)
Binding Specificity:	AA 232-340
Reactivity:	Human
Host:	Mouse
Clonality:	Monoclonal
Application:	Western Blotting (WB), ELISA, Proximity Ligation Assay (PLA)

## Product Details

Purpose:	Mouse monoclonal antibody raised against a partial recombinant CLTC.
Immunogen:	CLTC (NP_004850, 232 a.a. ~ 340 a.a) partial recombinant protein with GST tag. MW of the GST tag alone is 26 kDa.
Sequence:	EVGTPPTGNQ PFPKKAVDVF FPPEAQNDFF VAMQISEKHD VVFLITKYGY IHLYDLETGT CIYMNRISGE TIFVTAPHEA TAGIIGVNRK GQVLSVCVEE ENIIPYITN
Clone:	2E5
Isotype:	IgG2a
Cross-Reactivity:	Human
Characteristics:	Antibody Reactive Against Recombinant Protein.

## Target Details

Target:	Clathrin Heavy Chain (CLTC)
Alternative Name:	CLTC ( <a href="#">CLTC Products</a> )
Background:	Full Gene Name: clathrin, heavy chain (Hc) Synonyms: CHC,CHC17,CLH-17,CLTCL2,Hc,KIAA0034
Gene ID:	1213
NCBI Accession:	<a href="#">NM_004859</a>

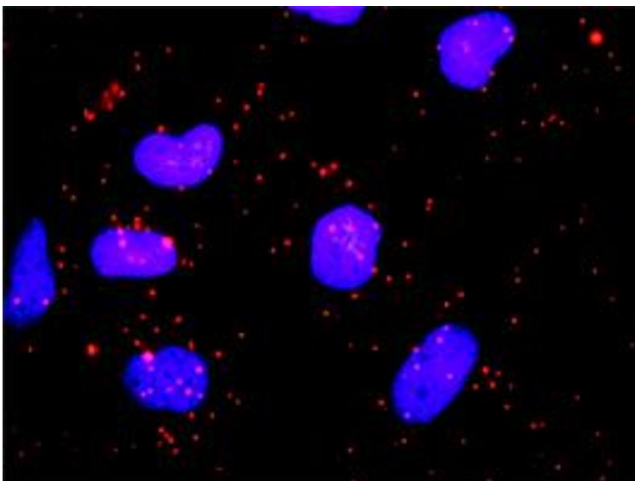
## Application Details

Application Notes:	Optimal working dilution should be determined by the investigator.
Restrictions:	For Research Use only

## Handling

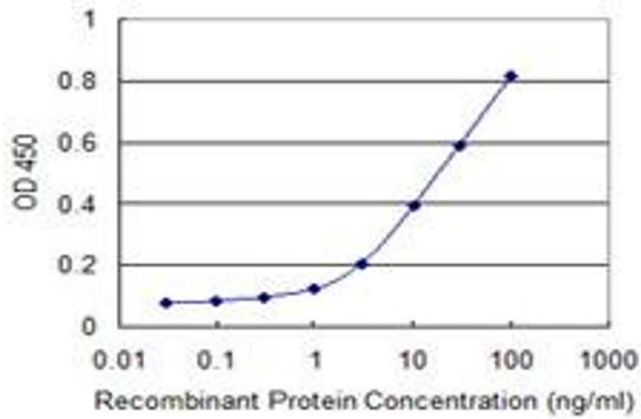
Buffer:	In 1x PBS, pH 7.4
Handling Advice:	Aliquot to avoid repeated freezing and thawing.
Storage:	-20 °C
Storage Comment:	Store at -20°C or lower. Aliquot to avoid repeated freezing and thawing.

## Images



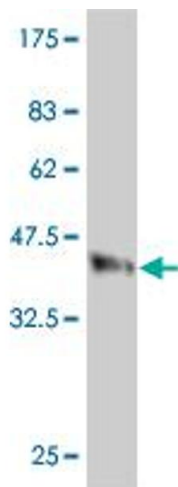
### Proximity Ligation Assay

**Image 1.** Proximity Ligation Analysis of protein-protein interactions between HIP1 and CLTC. HeLa cells were stained with anti-HIP1 rabbit purified polyclonal 1:1200 and anti-CLTC mouse monoclonal antibody 1:50. Each red dot represents the detection of protein-protein interaction complex, and nuclei were counterstained with DAPI (blue).



### ELISA

**Image 2.** Detection limit for recombinant GST tagged CLTC is 0.3 ng/ml as a capture antibody.



### Western Blotting

**Image 3.** Western Blot detection against Immunogen (37.73 KDa).