

Datasheet for ABIN7540242
E4F1 Protein (AA 1-784) (GST tag)



[Go to Product page](#)

1 Image

Overview

Quantity:	2 µg
Target:	E4F1
Protein Characteristics:	AA 1-784
Origin:	Human
Source:	Wheat germ
Protein Type:	Recombinant
Purification tag / Conjugate:	This E4F1 protein is labelled with GST tag.
Application:	ELISA, Western Blotting (WB), Antibody Array (AA), Affinity Purification (AP)

Product Details

Purpose:	E4F1 (Human) Recombinant Protein (P01)
Sequence:	MEGAMAVRVT AAHTAEAQAE AGREAGEGAV AAVAAALAPS GFLGLPAPFS EEDEDDVHRC GRCQAEFTAL EDFVQHKIQK ACQRAPPEAL PATPATTALL GQEVVPAAPG PEEPITVAHI VVEAASLAAD ISHASDLVGG GHIKEVIVAA EAELGDGEMA EAPGSPHQQG LGLAGEGEQA QVKLLVNKDG RYVCALCHKT FKTGSILKAH MVTHSSRKDH ECKLCGASFR TKGSLIRHHR RHTDERPYKC SKCGKSFRES GALTRHLKSL TPCTEKIRFS VSKDVVVSKE DARAGSGAGA AGLGTATSSV TGEPIETSPV IHLVTDAGKT VIHEVHVQMQ ELSLGMKALA PEPPVSQELP CSSEGSRENH LHQAMQNSGI VLERAAGEEG ALEPAPAAGS SPQPLAVAAP QLPVLEVQPL ETQVASEASA VPRTHPCPQC SETFPTAATL EAHKRGHTGP RPFACAQCGK AFPKAYLLKK HQEVHVRERR FRCGDCGKLY KTIAHVRGHR RVHSDEPYP CPKCGKRYKT KNAQQVHFRT HLEEKPHVCQ FCSRGFREKG SLVRHVRHHT GEKPFKCYKC GRGFAEHGTL NRHLRTKGGC LLEVEELLVS EDSPAAATTV LTEDPHTVLV EFSSVWADTQ EYIIEATADD AETSEATEII

Product Details

EGTQTEVDSH IMKVVQQIVH QASAGHQIIV QNVTMDEETA LGPEAAAAADT ITIATPESLT
EQVAMTLASA ISEGTVLAAR AGTSGTEQAT VTMVSSDIE ILEHAGELVI ASPEGQLEVQ TVIV

Characteristics: Human E4F1 full-length ORF (AAH80524.1, 1 a.a. - 784 a.a.) recombinant protein with GST-tag at N-terminal.

Purification: in vitro wheat germ expression system

Target Details

Target: E4F1

Alternative Name: E4F1 ([E4F1 Products](#))

Background: Full Gene Name: E4F transcription factor 1
Synonyms: E4F,MGC99614

Gene ID: 1877

Application Details

Application Notes: Optimal working dilution should be determined by the investigator.

Comment: Preparation method: in vitro, wheat germ expression system
Product Quality tested by: 12.5% SDS-PAGE Stained with Coomassie Blue.

Restrictions: For Research Use only

Handling

Buffer: 50 mM Tris-HCl, 10 mM reduced Glutathione, pH =8.0 in the elution buffer.

Handling Advice: Aliquot to avoid repeated freezing and thawing.

Storage: -80 °C

Storage Comment: Best use within three months from the date of receipt of this protein.

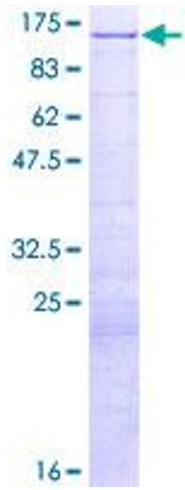


Image 1.