

Datasheet for ABIN7540244  
**GABRA5 Protein (AA 1-462) (GST tag)**



[Go to Product page](#)

1 Image

## Overview

Quantity:	2 µg
Target:	GABRA5
Protein Characteristics:	AA 1-462
Origin:	Human
Source:	Wheat germ
Protein Type:	Recombinant
Purification tag / Conjugate:	This GABRA5 protein is labelled with GST tag.
Application:	Western Blotting (WB), Antibody Array (AA), Affinity Purification (AP), ELISA

## Product Details

Purpose:	GABRA5 (Human) Recombinant Protein (P01)
Sequence:	MDNGMFSGFI MIKNLLLCI SMNLSSHFGF SQMPTSSVKD ETNDNITIFT RILDGLLDGY DNRLRPGLGE RITQVRTDIY VTSFGPVSDT EMEYTI DVFF RQSWKDERLR FKGPMQRLPL NNLLASKIWT PDTFFHNGKK SIAHNMTTPN KLPRLEDDGT LLYTMRLTIS AECPMQLEDF PMDAHACPLK FGSYAYPNSE VVYVWTNGST KSVVVAEDGS RLNQYHLMGQ TVGTENISTS TGEYTIMTAH FHLKRKIGYF VIQTYLPCIM TVILSQVSFW LNRESVPART VFGVTTVLTM TTLISARNS LPKVAYATAM DWFIACVYAF VFSALIEFAT VNYFTKRGWA WDGKKALEAA KIKKKREVIL NKSTNAFTTG KMSHPPNIPK EQTPAGTSNT TSVSVKPSEE KTSESKKTYN SISKIDKMSR IVFPVLFGT NLVYWATYLN REPVKGAAS PK
Characteristics:	Human GABRA5 full-length ORF (-, 1 a.a. - 462 a.a.) recombinant protein with GST-tag at N-terminal.

## Product Details

---

Purification: in vitro wheat germ expression system

## Target Details

---

Target: GABRA5

Alternative Name: GABRA5 ([GABRA5 Products](#))

Background: Full Gene Name: gamma-aminobutyric acid (GABA) A receptor, alpha 5  
Synonyms: MGC138184

Gene ID: 2558

Pathways: [Sensory Perception of Sound, Synaptic Membrane](#)

## Application Details

---

Application Notes: Optimal working dilution should be determined by the investigator.

Comment: Preparation method: in vitro, wheat germ expression system  
Product Quality tested by: 12.5% SDS-PAGE Stained with Coomassie Blue.

Restrictions: For Research Use only

## Handling

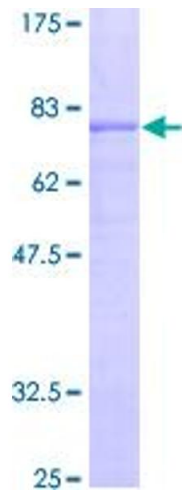
---

Buffer: 50 mM Tris-HCl, 10 mM reduced Glutathione, pH =8.0 in the elution buffer.

Handling Advice: Aliquot to avoid repeated freezing and thawing.

Storage: -80 °C

Storage Comment: Best use within three months from the date of receipt of this protein.



**Image 1.**