

Datasheet for ABIN7540245

**Golgin A2 (GOLGA2) (AA 1-345) protein (GST tag)**[Go to Product page](#)**1** Image

## Overview

Quantity:	2 µg
Target:	Golgin A2 (GOLGA2)
Protein Characteristics:	AA 1-345
Origin:	Human
Source:	Wheat germ
Protein Type:	Recombinant
Purification tag / Conjugate:	GST tag
Application:	Western Blotting (WB), ELISA, Antibody Array (AA), Affinity Purification (AP)

## Product Details

Purpose:	GOLGA2 (Human) Recombinant Protein (P01)
Sequence:	<p>MQNDRTTISR ALSQNRELKE QLAEQSGFV KLTNENMEIT SALQSEQHVK RELGKKLGEL QEKLSELKET VELKSQEAQS LQQQRDQYLG HLQQYVAAYQ QLTSEKEVLH NQLLLQTQLV DQLQQQEAQG KAVAEMARQE LQETQERLEA ATQQNQQLRA QLSLMAHPGE GDGLDREEEE DEEEEEEEAVA VPQPMPPIPE DLESREAMVA FFNSAVASAE EEQARLRGQL KEQSVRCRRL AHLASAQKE PAAAAPAPGT GGDSVCGETH RALQGAMEKL QSRFMELMQE KADLKERPGR VLPVTTPLHS RSCSCFVRCR TPGSAQAWAA TPAFLFFTGL TRMMR</p>
Characteristics:	Human GOLGA2 full-length ORF ( AAH06381.1, 1 a.a. - 345 a.a.) recombinant protein with GST-tag at N-terminal.
Purification:	in vitro wheat germ expression system

## Target Details

Target:	Golgin A2 (GOLGA2)
Alternative Name:	GOLGA2 ( <a href="#">GOLGA2 Products</a> )
Background:	Full Gene Name: golgi autoantigen, golgin subfamily a, 2 Synonyms: GM130,MGC20672
Gene ID:	2801
Pathways:	<a href="#">SARS-CoV-2 Protein Interactome</a>

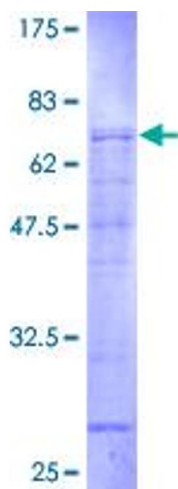
## Application Details

Application Notes:	Optimal working dilution should be determined by the investigator.
Comment:	Preparation method: in vitro, wheat germ expression system Product Quality tested by: 12.5% SDS-PAGE Stained with Coomassie Blue.
Restrictions:	For Research Use only

## Handling

Buffer:	50 mM Tris-HCl, 10 mM reduced Glutathione, pH =8.0 in the elution buffer.
Handling Advice:	Aliquot to avoid repeated freezing and thawing.
Storage:	-80 °C
Storage Comment:	Best use within three months from the date of receipt of this protein.

## Images



**Image 1.**