

Datasheet for ABIN7540248  
**KEL Protein (AA 1-732) (GST tag)**



[Go to Product page](#)

1 Image

## Overview

Quantity:	2 µg
Target:	KEL
Protein Characteristics:	AA 1-732
Origin:	Human
Source:	Wheat germ
Protein Type:	Recombinant
Purification tag / Conjugate:	This KEL protein is labelled with GST tag.
Application:	Western Blotting (WB), ELISA, Affinity Purification (AP), Antibody Array (AA)

## Product Details

Purpose:	KEL (Human) Recombinant Protein (P01)
Sequence:	MEGGDQSEEE PRERSQAGGM GTLWSQESTP EERLPVEGSR PWAVARRVLT AILILGLLLC FSVLLFYNFQ NCGPRPCETS VCLDLRDHYL ASGNTSVAPC TDFFSFACGR AKETNNSFQE LATKNKNRLR RILEVQNSWH PGSGEKAFQ FYNSCMDTLA IEAAGTGPLR QVIEELGGWR ISGKWTSLNF NRTLRLMSQ YGHFPFFRAY LGPHPASPHT PVIQIDQPEF DVPLKQDQEQ KIYAQIFREY LTYLNQLGTL LGGDPSKVQE HSSLSISITS RLFQFLRPLE QRRRAQGKLFQ MVTIDQLKEM APAIDWLSCL QATFTPMSLS PSQSLVVHDV EYLNKMSQLV EEMLLKQRDF LQSHMILGLV VTLSPALDSQ FQEARRLKSQ KLRELTEQPP MPARPRWMKC VEETGTFEFP TLAALFVREA FGPSTRSAAM KLFTAIRDAL ITRLRNLPWM NEETQNMAQD KVAQLQVEMG ASEWALKPEL ARQEYNDIQL GSSFLQSVLS CVRSLRARIV QSFLQPHPQH RWKVSPWDVN AYYSVSDHV VFPAGLLQPP FFHPGYPRAV NFGAAGSIMA HELLHIFYQL LLPGGCLACD NHALQEHLK LKRHYAAFPL PSRTSFNDSL TFLENAADVG GLAIALQAYS KRLLRHHGET

## Product Details

---

VLPSLDLSPQ QIFFRSYAQV MCRKPSPQDS HDTHSPPHLR VHGPLSSTPA FARYFRCARG  
ALLNPSSRCQ LW

Characteristics: Human KEL full-length ORF ( NP\_000411.1, 1 a.a. - 732 a.a.) recombinant protein with GST-tag at N-terminal.

Purification: in vitro wheat germ expression system

## Target Details

---

Target: KEL

Alternative Name: KEL ([KEL Products](#))

Background: Full Gene Name: Kell blood group, metallo-endopeptidase  
Synonyms: CD238,ECE3

Gene ID: 3792

NCBI Accession: [NM\\_000420](#)

## Application Details

---

Application Notes: Optimal working dilution should be determined by the investigator.

Comment: Preparation method: in vitro, wheat germ expression system  
Product Quality tested by: 12.5% SDS-PAGE Stained with Coomassie Blue.

Restrictions: For Research Use only

## Handling

---

Buffer: 50 mM Tris-HCl, 10 mM reduced Glutathione, pH =8.0 in the elution buffer.

Handling Advice: Aliquot to avoid repeated freezing and thawing.

Storage: -80 °C

Storage Comment: Best use within three months from the date of receipt of this protein.

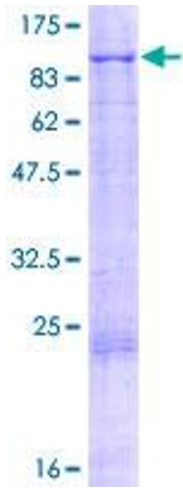


Image 1.