

Datasheet for ABIN7540252
RNASE2 Protein (AA 1-161) (GST tag)



[Go to Product page](#)

1 Image

Overview

Quantity:	2 µg
Target:	RNASE2
Protein Characteristics:	AA 1-161
Origin:	Human
Source:	Wheat germ
Protein Type:	Recombinant
Purification tag / Conjugate:	This RNASE2 protein is labelled with GST tag.
Application:	Western Blotting (WB), ELISA, Affinity Purification (AP), Antibody Array (AA)

Product Details

Purpose:	RNASE2 (Human) Recombinant Protein (P01)
Sequence:	MVPKLFTSQI CLLLLLGLLA VEGSLHVKPP QFTWAQWFET QHINMTSQQC TNAMQVINNY QRRCKNQNTF LLTTFANVVN VCGNPNMTCV SNKTRKNCHH SGSQVPLIHC NLTPSPQNI SNCRYAQTPA NMFYIVACDN RDQRRDPPQY PVVPVHLDRI I
Characteristics:	Human RNASE2 full-length ORF (NP_002925.1, 1 a.a. - 161 a.a.) recombinant protein with GST-tag at N-terminal.
Purification:	in vitro wheat germ expression system

Target Details

Target:	RNASE2
Alternative Name:	RNASE2 (RNASE2 Products)

Target Details

Background:	Gene: ribonuclease, RNase A family, 2 (liver, eosinophil-derived neurotoxin) Synonyms: EDN, RNS2
Gene ID:	6036
NCBI Accession:	NM_002934

Application Details

Application Notes:	Optimal working dilution should be determined by the investigator.
Restrictions:	For Research Use only

Handling

Buffer:	50 mM Tris-HCl, 10 mM reduced Glutathione, pH =8.0 in the elution buffer.
Handling Advice:	Aliquot to avoid repeated freezing and thawing.
Storage:	-80 °C
Storage Comment:	Best use within three months from the date of receipt of this protein.

Images

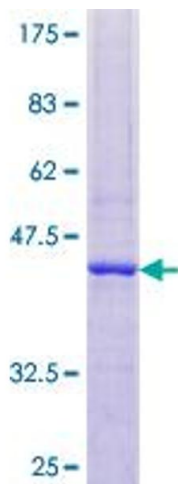


Image 1.