

Datasheet for ABIN7540253

**SLC6A8 Protein (AA 1-635) (GST tag)**[Go to Product page](#)**1** Image

## Overview

Quantity:	2 µg
Target:	SLC6A8
Protein Characteristics:	AA 1-635
Origin:	Human
Source:	Wheat germ
Protein Type:	Recombinant
Purification tag / Conjugate:	This SLC6A8 protein is labelled with GST tag.
Application:	Affinity Purification (AP), ELISA, Western Blotting (WB), Antibody Array (AA)

## Product Details

Purpose:	SLC6A8 (Human) Recombinant Protein (P01)
Sequence:	MAKXSAENGI YSVSGDEKKG PLIAPGPDGA PAKGDGPVGL GTPGGRLAVP PRETWTRQMD FIMSCVGFVAV GLGNVWRFPY LCYKNGGGVF LIPYVLIALV GGIPIFFLEI SLGQFMKAGS INVWNICPLF KGLGYASMVI VFYCNTYYIM VLAWGFYYLV KSFTTTLPWA TCGHTWNTPD CVEIFRHEDC ANASLANLTC DQLADRRSPV IEFWENKVL RLSGGLEVPGA LNWEVTLCLL ACWVLVYFCV WKGVKSTGKI VYFTATFPYV VLVVLLVRGV LLPGALDGII YYLKPDSKSL GSPQVWIDAG TQIFFSYAIG LGALTALGSY NRFNNCYKD AILALINSG TSFFAGFVVF SILGFMAAEQ GVHISKVAES GPGFLAFIAYP RAVTLMPVAP LWAALFFFML LLLGLDSQFV GVEGFITGLL DLLRASYYFR FQREISVALC CALCFVIDLS MVTDGGMYVF QLFDYYSASG TTLLWQAFWE CVVVAWVYGA DRFMDDIACM IGYRCPWMK WCWSFFTPLV CMGIFIFNVV YYEPLVYNNT YVYPWWGEAM GWAFALSSML CVPLHLLGCL LRAKGTMAER WQHLTQPIWG LHHLEYRAQD ADVRGLTTLT PVSESSKVVV VESVM

## Product Details

---

Characteristics: Human SLC6A8 full-length ORF ( AAH81558.1, 1 a.a. - 635 a.a.) recombinant protein with GST-tag at N-terminal.

---

Purification: in vitro wheat germ expression system

---

## Target Details

---

Target: SLC6A8

---

Alternative Name: SLC6A8 ([SLC6A8 Products](#))

---

Background: Full Gene Name: solute carrier family 6 (neurotransmitter transporter, creatine), member 8  
Synonyms: CRT,CRTR,CT1,MGC87396

---

Gene ID: 6535

---

Pathways: [Retinoic Acid Receptor Signaling Pathway](#), [Intracellular Steroid Hormone Receptor Signaling Pathway](#), [Regulation of Intracellular Steroid Hormone Receptor Signaling](#), [Nuclear Hormone Receptor Binding](#), [ER-Nucleus Signaling](#), [Unfolded Protein Response](#)

---

## Application Details

---

Application Notes: Optimal working dilution should be determined by the investigator.

---

Comment: Preparation method: in vitro, wheat germ expression system  
Product Quality tested by: 12.5% SDS-PAGE Stained with Coomassie Blue.

---

Restrictions: For Research Use only

---

## Handling

---

Buffer: 50 mM Tris-HCl, 10 mM reduced Glutathione, pH =8.0 in the elution buffer.

---

Handling Advice: Aliquot to avoid repeated freezing and thawing.

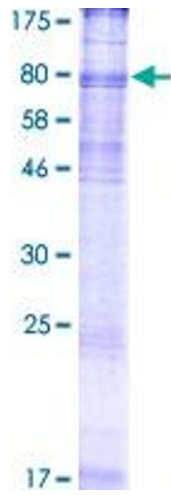
---

Storage: -80 °C

---

Storage Comment: Best use within three months from the date of receipt of this protein.

---



**Image 1.**