

Datasheet for ABIN7540254
SLC16A1 Protein (AA 1-500) (GST tag)



[Go to Product page](#)

1 Image

Overview

| | |
|-------------------------------|---|
| Quantity: | 2 µg |
| Target: | SLC16A1 |
| Protein Characteristics: | AA 1-500 |
| Origin: | Human |
| Source: | Wheat germ |
| Protein Type: | Recombinant |
| Purification tag / Conjugate: | This SLC16A1 protein is labelled with GST tag. |
| Application: | Western Blotting (WB), ELISA, Affinity Purification (AP), Antibody Array (AA) |

Product Details

| | |
|------------------|--|
| Purpose: | SLC16A1 (Human) Recombinant Protein (P01) |
| Sequence: | MPPAVGGPVG YTPPDGGGW AVVIGAFISI GFSYAFP KSI TVFFKEIEGI FHATTSEVSW ISSIMLAVMY GGGPISSILV NKYGSRI VMI VGGCLSGCGL IAASFCNTVQ QLYVCIGVIG GLGLAFNLNP ALTMIGKYFY KRRPLANGLA MAGSPVFLCT LAPLNQVFFG IFGWRGSFLI LGLLLLNCCV AGALMRPIGP KPTKAGKDKS KASLEKAGKS GVKKDLHDAN TDLIGRHPKQ EKRSVFQTIN QFLDLTLFTH RGFLLYLSGN VIMFFGLFAP LVFLSSYGKS QHYSSEKSAF LLSILAFVDM VARPSMGLVA NTKPIRPRIQ YFFAASVAN GVCHMLAPLS TTYVGFVYA GFFGFAGWL SSVLFETLMD LVGPQRFSSA VGLVTIVECC PVLLGPPLLG RLNDMYGDYK YTYWACGVVL IISGIYLFIG MGINYRLLAK EQKANEQKKE SKEETSIDV AGKPNEVTKA AESPDQKDTE GGPKEEESPV |
| Characteristics: | Human SLC16A1 full-length ORF (P53985, 1 a.a. - 500 a.a.) recombinant protein with GST-tag at N-terminal. |

Product Details

Purification: in vitro wheat germ expression system

Target Details

Target: SLC16A1

Alternative Name: SLC16A1 ([SLC16A1 Products](#))

Background: Full Gene Name: solute carrier family 16, member 1 (monocarboxylic acid transporter 1)
Synonyms: FLJ36745,HHF7,MCT,MCT1,MGC44475

Gene ID: 6566

UniProt: [P53985](#)

Pathways: [Warburg Effect](#)

Application Details

Application Notes: Optimal working dilution should be determined by the investigator.

Comment: Preparation method: in vitro, wheat germ expression system
Product Quality tested by: 12.5% SDS-PAGE Stained with Coomassie Blue.

Restrictions: For Research Use only

Handling

Buffer: 50 mM Tris-HCl, 10 mM reduced Glutathione, pH =8.0 in the elution buffer.

Handling Advice: Aliquot to avoid repeated freezing and thawing.

Storage: -80 °C

Storage Comment: Best use within three months from the date of receipt of this protein.

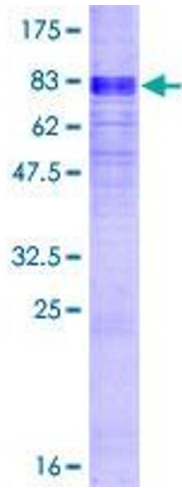


Image 1.