

Datasheet for ABIN7540258
YY1 Protein (AA 1-414) (GST tag)



[Go to Product page](#)

1 Image

Overview

Quantity:	2 µg
Target:	YY1
Protein Characteristics:	AA 1-414
Origin:	Human
Source:	Wheat germ
Protein Type:	Recombinant
Purification tag / Conjugate:	This YY1 protein is labelled with GST tag.
Application:	Western Blotting (WB), ELISA, Antibody Array (AA), Affinity Purification (AP)

Product Details

Purpose:	YY1 (Human) Recombinant Protein (P01)
Sequence:	MASGDTLYIA TDGSEMPAEI VELHEIEVET IPVETIETTV VGEEDDD DEDGGGGDHG GGGGHGHAGH HHHHHHHHHH PPMIALQPLV TDDPTQVHHH QEVILVQTRE EVVGGDDSDG LRAEDGFEDQ ILIPVPAPAG GDDDYIEQTL VTVAAGKSG GGGSSSSGGG RVKKGKGGKKS GKKSYSLSSGA GAAGGGGADP GNKKWEQKQV QIKTLEGEFS VTMWSSDEKK DIDHETVVEE QIIGENSPPD YSEYMTGKKL PPGGIPGIDL SDPKQLAEFA RMKPRKIKED DAPRTIACPH KGCTKMFRDN SAMRKHLHHTH GPRVHVCAEC GKAFVSSKL KRHQLVHTGE KPFQCTFEGC GKRFLDFNL RTHVRIHTGD RPYVCPFDGC NKKFAQSTNL KSHILTHAKA KNNQ
Characteristics:	Human YY1 full-length ORF (NP_003394.1, 1 a.a. - 414 a.a.) recombinant protein with GST-tag at N-terminal.
Purification:	in vitro wheat germ expression system

Target Details

Target:	YY1
Alternative Name:	YY1 (YY1 Products)
Background:	Full Gene Name: YY1 transcription factor Synonyms: DELTA,INO80S,NF-E1,UCRBP,YIN-YANG-1
Gene ID:	7528
NCBI Accession:	NM_003403

Application Details

Application Notes:	Optimal working dilution should be determined by the investigator.
Comment:	Preparation method: in vitro, wheat germ expression system Product Quality tested by: 12.5% SDS-PAGE Stained with Coomassie Blue.
Restrictions:	For Research Use only

Handling

Buffer:	50 mM Tris-HCl, 10 mM reduced Glutathione, pH =8.0 in the elution buffer.
Handling Advice:	Aliquot to avoid repeated freezing and thawing.
Storage:	-80 °C
Storage Comment:	Best use within three months from the date of receipt of this protein.

Images

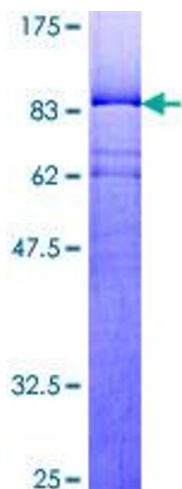


Image 1.