

Datasheet for ABIN7540260
GFI1B Protein (AA 1-330) (GST tag)



[Go to Product page](#)

1 Image

Overview

Quantity:	2 µg
Target:	GFI1B
Protein Characteristics:	AA 1-330
Origin:	Human
Source:	Wheat germ
Protein Type:	Recombinant
Purification tag / Conjugate:	This GFI1B protein is labelled with GST tag.
Application:	ELISA, Western Blotting (WB), Antibody Array (AA), Affinity Purification (AP)

Product Details

Purpose:	GFI1B (Human) Recombinant Protein (P01)
Sequence:	MPRSFLVKSK KAHTYHQPRV QEDEPLWPPA LTPVPRDQAP SNSPVLSTLF PNQCLDWTNL KREPELEQDQ NLARMAPAPE GPIVLSRPQD GDSPLSDSPP FYKPSFSWDT LATTYGHSYR QAPSTMQSAF LEHSVSLYGS PLVPSTEPAL DFSLRYSPGM DAYHCVKCNK VFSTPHGLEV HVRRSHSGTR PFACDICGKT FGHAVSLEQH THVHSQERSF ECRMCGKAFK RSSTLSTHLL IHS DTRPYPC QFCGKRFHQK SDMCKHTYIH TGEKPHKCQV CGKAFSQSSN LITHSRKHTG FKPFSCSELCT KGFQRKVDLR RHRESQHNLK
Characteristics:	Human GFI1B full-length ORF (AAH43371.1, 1 a.a. - 330 a.a.) recombinant protein with GST-tag at N-terminal.
Purification:	in vitro wheat germ expression system

Target Details

Target:	GFI1B
Alternative Name:	GFI1B (GFI1B Products)
Background:	Full Gene Name: growth factor independent 1B transcription repressor Synonyms:
Gene ID:	8328
Pathways:	Cellular Response to Molecule of Bacterial Origin

Application Details

Application Notes:	Optimal working dilution should be determined by the investigator.
Comment:	Preparation method: in vitro, wheat germ expression system Product Quality tested by: 12.5% SDS-PAGE Stained with Coomassie Blue.
Restrictions:	For Research Use only

Handling

Buffer:	50 mM Tris-HCl, 10 mM reduced Glutathione, pH =8.0 in the elution buffer.
Handling Advice:	Aliquot to avoid repeated freezing and thawing.
Storage:	-80 °C
Storage Comment:	Best use within three months from the date of receipt of this protein.

Images

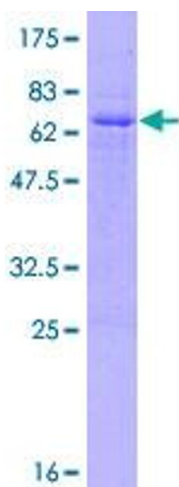


Image 1.