

Datasheet for ABIN7540262
CRLF1 Protein (AA 1-422) (GST tag)



[Go to Product page](#)

1 Image

Overview

Quantity:	2 µg
Target:	CRLF1
Protein Characteristics:	AA 1-422
Origin:	Human
Source:	Wheat germ
Protein Type:	Recombinant
Purification tag / Conjugate:	This CRLF1 protein is labelled with GST tag.
Application:	Western Blotting (WB), Antibody Array (AA), Affinity Purification (AP), ELISA

Product Details

Purpose:	CRLF1 (Human) Recombinant Protein (P01)
Sequence:	MPAGRRGPAA QSARRPPPLL PLLLLLCVLG APRAGSGAHT AVISPQDPTL LIGSSLLATC SVHGDPPGAT AEGLYWTLNG RRLPELSRV LNA STLALAL ANLNGSRQRS GDNLVCHARD GSILAGSCLY VGLPPEKPVN ISCWSKNMKD LTCRWTPGAH GETFLHTNYS LKYKLRWYGQ DNTCEEYHTV GPHSCHIPKD LALFTPYEIW VEATNRLGSA RSDVLTLDIL DVVTTDPPPD VHVS RVGGLE DQLSVRWVSP PALKDFLFQA KYQIRYRVED SVDWKVVDDV SNQTSCRLAG LKPGETVYFVQ VRCNPFGIYG SKKAGIWSEW SHPTAASTPR SERPGPGGGA CEPRGGEPSS GPVRRLEKQF LGWLKKHAYC SNLSFRLYDQ WRAWMQKSHK TRNQDEGILP SGRRGTARGP AR
Characteristics:	Human CRLF1 full-length ORF (NP_004741.1, 1 a.a. - 422 a.a.) recombinant protein with GST-tag at N-terminal.
Purification:	in vitro wheat germ expression system

Target Details

Target:	CRLF1
Alternative Name:	CRLF1 (CRLF1 Products)
Background:	Full Gene Name: cytokine receptor-like factor 1 Synonyms: CISS,CISS1,CLF,CLF-1,NR6
Gene ID:	9244
NCBI Accession:	NM_004750

Application Details

Application Notes:	Optimal working dilution should be determined by the investigator.
Comment:	Preparation method: in vitro, wheat germ expression system Product Quality tested by: 12.5% SDS-PAGE Stained with Coomassie Blue.
Restrictions:	For Research Use only

Handling

Buffer:	50 mM Tris-HCl, 10 mM reduced Glutathione, pH =8.0 in the elution buffer.
Handling Advice:	Aliquot to avoid repeated freezing and thawing.
Storage:	-80 °C
Storage Comment:	Best use within three months from the date of receipt of this protein.

Images

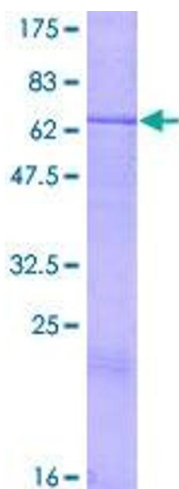


Image 1.