

Datasheet for ABIN7540263  
**LY86 Protein (AA 26-125) (GST tag)**



[Go to Product page](#)

1 Image

## Overview

Quantity:	2 µg
Target:	LY86
Protein Characteristics:	AA 26-125
Origin:	Human
Source:	Wheat germ
Protein Type:	Recombinant
Purification tag / Conjugate:	This LY86 protein is labelled with GST tag.
Application:	ELISA, Western Blotting (WB), Affinity Purification (AP), Antibody Array (AA)

## Product Details

Purpose:	LY86 (Human) Recombinant Protein (Q01)
Sequence:	AWPTHVVCSD SGLEVLQYQSC DPLQDFGFSV EKCSKQLKSN INIRFGIILR EDIKELFLDL ALMSQGSSVL NFSYPICEAA LPKFSFCGRR KGEQIYYAGP
Characteristics:	Human LY86 partial ORF ( AAH38846, 26 a.a. - 125 a.a.) recombinant protein with GST-tag at N-terminal.
Purification:	in vitro wheat germ expression system

## Target Details

Target:	LY86
Alternative Name:	LY86 ( <a href="#">LY86 Products</a> )

## Target Details

Background: Full Gene Name: lymphocyte antigen 86  
Synonyms: MD-1,MMD-1,dJ80N2.1

Gene ID: 9450

Pathways: [Toll-Like Receptors Cascades](#)

## Application Details

Application Notes: Optimal working dilution should be determined by the investigator.

Comment: Preparation method: in vitro, wheat germ expression system  
Product Quality tested by: 12.5% SDS-PAGE Stained with Coomassie Blue.

Restrictions: For Research Use only

## Handling

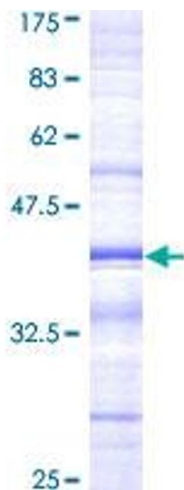
Buffer: 50 mM Tris-HCl, 10 mM reduced Glutathione, pH =8.0 in the elution buffer.

Handling Advice: Aliquot to avoid repeated freezing and thawing.

Storage: -80 °C

Storage Comment: Best use within three months from the date of receipt of this protein.

## Images



**Image 1.**