

Datasheet for ABIN7540270
SLC7A9 Protein (AA 1-487) (GST tag)



[Go to Product page](#)

1 Image

Overview

Quantity:	2 µg
Target:	SLC7A9
Protein Characteristics:	AA 1-487
Origin:	Human
Source:	Wheat germ
Protein Type:	Recombinant
Purification tag / Conjugate:	This SLC7A9 protein is labelled with GST tag.
Application:	Western Blotting (WB), ELISA, Affinity Purification (AP), Antibody Array (AA)

Product Details

Purpose:	SLC7A9 (Human) Recombinant Protein (P01)
Sequence:	MGDTGLRKRR EDEKSIQSQE PKTTSLQKEL GLISGISIIV GTIIGSGIFV SPKSVLSNTE AVGPCLIIWA ACGVLATLGA LCFAELGTMI TKSGGEYPYL MEAYGPIPAY LFSWASLIVI KPTSFAIICL SFSEYVCAPF YVGCKPPQIV VKCLAAAAIL FISTVNSLSV RLGSYVQNIF TAAKLVIVAI IISGLVLLA QGNTKNFDNS FEQAQLSVGA ISLAFYINGLW AYDGWNQLNY ITEELRNPYR NLPLAIIIGI PLVTACYILM NVSYFTVMTA TELLQSQAVA VTFGDRVLYP ASWIVPLFVA FSTIGAANGT CFTAGRLIYV AGREGHMLKV LSYISVRRRLT PAPAIIFYGI IATIIYIPGD INSLVNYFSF AAWLFYGLTI LGLIVMRFRTR KELERPIKVP WVIPVLMTLI SVFLVLAPII SKPTWEYLYC VLFILSGLLF YFLFVHYKFG WAQKISKPIT MHLQMLMEVV PPEEDPE
Characteristics:	Human SLC7A9 full-length ORF (NP_055085.1, 1 a.a. - 487 a.a.) recombinant protein with GST-tag at N-terminal.

Product Details

Purification: in vitro wheat germ expression system

Target Details

Target: SLC7A9

Alternative Name: SLC7A9 ([SLC7A9 Products](#))

Background: Full Gene Name: solute carrier family 7 (cationic amino acid transporter, y+ system), member 9
Synonyms: BAT1,CSNU3,FLJ94301

Gene ID: 11136

NCBI Accession: [NM_014270](#)

Application Details

Application Notes: Optimal working dilution should be determined by the investigator.

Comment: Preparation method: in vitro, wheat germ expression system
Product Quality tested by: 12.5% SDS-PAGE Stained with Coomassie Blue.

Restrictions: For Research Use only

Handling

Buffer: 50 mM Tris-HCl, 10 mM reduced Glutathione, pH =8.0 in the elution buffer.

Handling Advice: Aliquot to avoid repeated freezing and thawing.

Storage: -80 °C

Storage Comment: Best use within three months from the date of receipt of this protein.

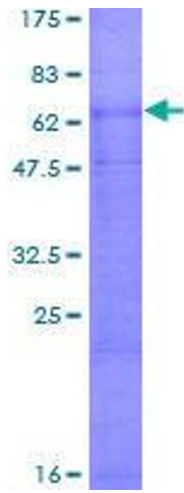


Image 1.