

Datasheet for ABIN7540271
BVES Protein (AA 1-360) (GST tag)



[Go to Product page](#)

1 Image

Overview

Quantity:	2 µg
Target:	BVES
Protein Characteristics:	AA 1-360
Origin:	Human
Source:	Wheat germ
Protein Type:	Recombinant
Purification tag / Conjugate:	This BVES protein is labelled with GST tag.
Application:	ELISA, Western Blotting (WB), Antibody Array (AA), Affinity Purification (AP)

Product Details

Purpose:	BVES (Human) Recombinant Protein (P01)
Sequence:	MNYTESSPLR ESTAIGFTPE LESIIPVPSN KTTCCENWREI HHLVFHVANI CFAVGLVIPT TLHLHMIFLR GMLTLGCTLY IVWATLYRCA LDIMIWNVSF LGVNILHLSY LLYKKRPVKI EKELSGMYRR LFEPLRVPPD LFRRLTGQFC MIQTLKKGQT YAAEDKTSVD DRLSILLK GK MKVSYRGHFL HNIYPCAFID SPEFRSTQMH KGEKFQVTII ADDNCRFLCW SRERLTYFLE SEPFLYEIFR YLIGKDITNK LYSLNDPTLN DKKAKKLEHQ LSLCTQISML EMRNSIASSS DSDDGLHQFL RGTSSMSSLH VSSPHQRASA KMKPIEEGAE DDDDFVFPAS PNTLKVHQLP
Characteristics:	Human BVES full-length ORF (NP_009004.2, 1 a.a. - 360 a.a.) recombinant protein with GST-tag at N-terminal.
Purification:	in vitro wheat germ expression system

Target Details

Target:	BVES
Alternative Name:	BVES (BVES Products)
Background:	Full Gene Name: blood vessel epicardial substance Synonyms: HBVES,MGC42413,POP1,POPDC1
Gene ID:	11149
NCBI Accession:	NM_007073

Application Details

Application Notes:	Optimal working dilution should be determined by the investigator.
Comment:	Preparation method: in vitro, wheat germ expression system Product Quality tested by: 12.5% SDS-PAGE Stained with Coomassie Blue.
Restrictions:	For Research Use only

Handling

Buffer:	50 mM Tris-HCl, 10 mM reduced Glutathione, pH =8.0 in the elution buffer.
Handling Advice:	Aliquot to avoid repeated freezing and thawing.
Storage:	-80 °C
Storage Comment:	Best use within three months from the date of receipt of this protein.

Images

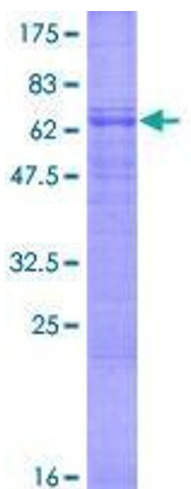


Image 1.